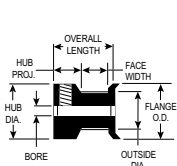
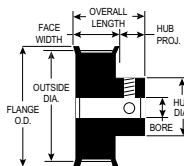


ALUMINUM WITH CLEAR ANODIZE (RoHS compliant)

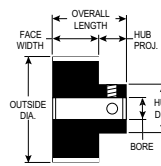
FOR BELTS UP TO 6MM WIDE



TYPE 6FC



TYPE 6F



TYPE 6

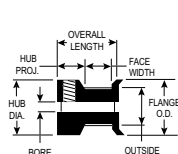


PART NUMBER	NO. OF GROOVES	PITCH DIA.	OUTSIDE DIA.	FLANGE O.D.	TYPE	BORE (+.001 / -.000)	FACE WIDTH	OVERALL LENGTH	HUB PROJ.	HUB DIA.	SET SCREWS
12-2GT06-6A X 1/8	12	.301	.281	.480	6FC	.1250	.285	9/16	15/64	.480	4-40(1)
14-2GT06-6A X 1/8	14	.351	.331	.530	6FC	.1250	.285	9/16	15/64	.530	4-40(1)
15-2GT06-6A X 3/16	15	.376	.356	.555	6FC	.1875	.285	9/16	15/64	.555	6-40(1)
16-2GT06-6A X 3/16	16	.401	.381	.580	6FC	.1875	.285	9/16	15/64	.580	6-40(1)
18-2GT06-6A X 1/4	18	.451	.431	.635	6FC	.2500	.285	9/16	15/64	.635	6-40(2)
20-2GT06-6A X 1/4	20	.501	.481	.685	6FC	.2500	.285	9/16	15/64	.685	6-40(2)
21-2GT06-6A X 1/4	21	.526	.506	.710	6FC	.2500	.285	9/16	15/64	.710	6-40(2)
22-2GT06-6A X 1/4	22	.551	.531	.740	6FC	.2500	.285	9/16	15/64	.740	6-40(2)
18-2GT06-1A X 3/16	18	.451	.431	.635	6F	.1875	.389	5/8	15/64	.312	6-40(2)
20-2GT06-1A X 3/16	20	.501	.481	.685	6F	.1875	.389	5/8	15/64	.364	6-40(2)
21-2GT06-1A X 3/16	21	.526	.506	.710	6F	.1875	.389	5/8	15/64	.390	6-40(2)
22-2GT06-1A X 3/16	22	.551	.531	.740	6F	.1875	.389	5/8	15/64	.390	6-40(2)
24-2GT06-1A X 1/4	24	.602	.582	.790	6F	.2500	.389	11/16	19/64	.442	6-40(2)
28-2GT06-1A X 1/4	28	.702	.682	.895	6F	.2500	.389	11/16	19/64	.494	6-40(2)
30-2GT06-1A X 1/4	30	.752	.732	.945	6F	.2500	.389	11/16	19/64	.546	8-32(2)
32-2GT06-1A X 1/4	32	.802	.782	1.000	6F	.2500	.389	11/16	19/64	.598	8-32(2)
36-2GT06-1A X 1/4	36	.902	.882	1.105	6F	.2500	.389	11/16	19/64	.676	8-32(2)
40-2GT06-1A X 1/4	40	1.003	.983	1.210	6F	.2500	.405	23/32	5/16	.754	8-32(2)
42-2GT06-1A X 1/4	42	1.053	1.033	1.260	6F	.2500	.405	23/32	5/16	.806	8-32(2)
44-2GT06-1A X 1/4	44	1.103	1.083	1.315	6F	.2500	.405	23/32	5/16	.858	8-32(2)
48-2GT06-1A X 1/4	48	1.203	1.183	1.420	6F	.2500	.405	23/32	5/16	.936	8-32(2)
60-2GT06-1A X 1/4	60	1.504	1.484	1.730	6F	.2500	.405	23/32	5/16	1.222	8-32(2)
60-2GT06-2A X 1/4	60	1.504	1.484	-	6	.2500	.375	3/4	3/8	1.148	8-32(2)
72-2GT06-2A X 1/4	72	1.805	1.785	-	6	.2500	.375	3/4	3/8	1.195	8-32(2)
80-2GT06-2A X 5/16	80	2.005	1.985	-	6	.3125	.375	3/4	3/8	1.500	8-32(2)
90-2GT06-2A X 5/16	90	2.256	2.236	-	6	.3125	.375	3/4	3/8	1.500	8-32(2)
100-2GT06-2A X 5/16	100	2.506	2.486	-	6	.3125	.375	3/4	3/8	1.500	8-32(2)
120-2GT06-2A X 3/8	120	3.008	2.988	-	6	.3750	.375	3/4	3/8	1.500	10-32(2)

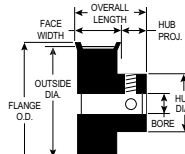


ALUMINUM WITH CLEAR ANODIZE (RoHS compliant)

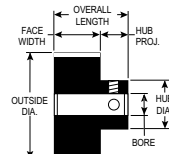
FOR BELTS UP TO 9MM WIDE



TYPE 6FC



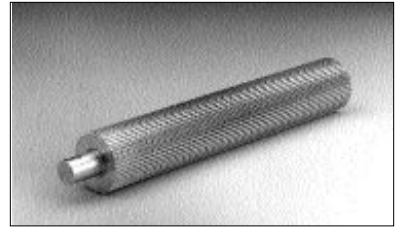
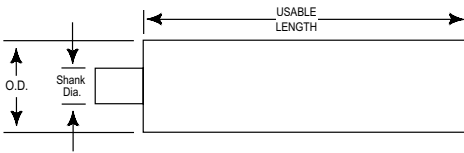
TYPE 6F



TYPE 6

PART NUMBER	NO. OF GROOVES	PITCH DIA.	OUTSIDE DIA.	FLANGE O.D.	TYPE	BORE (+.001 / -.000)	FACE WIDTH	OVERALL LENGTH	HUB PROJ.	HUB DIA.	SET SCREWS
12-2GT09-6A X 1/8	12	.301	.281	.480	6FC	.1250	.410	11/16	15/64	.480	4-40(1)
14-2GT09-6A X 1/8	14	.351	.331	.530	6FC	.1250	.410	11/16	15/64	.530	4-40(1)
15-2GT09-6A X 3/16	15	.376	.356	.555	6FC	.1875	.410	11/16	15/64	.555	6-40(1)
16-2GT09-6A X 3/16	16	.401	.381	.580	6FC	.1875	.410	11/16	15/64	.580	6-40(1)
18-2GT09-6A X 1/4	18	.451	.431	.635	6FC	.2500	.410	11/16	15/64	.635	6-40(2)
20-2GT09-6A X 1/4	20	.501	.481	.685	6FC	.2500	.410	11/16	15/64	.685	6-40(2)
21-2GT09-6A X 1/4	21	.526	.506	.710	6FC	.2500	.410	11/16	15/64	.710	6-40(2)
22-2GT09-6A X 1/4	22	.551	.531	.740	6FC	.2500	.410	11/16	15/64	.740	6-40(2)
18-2GT09-1A X 3/16	18	.451	.431	.635	6F	.1875	.514	3/4	15/64	.312	6-40(2)
20-2GT09-1A X 3/16	20	.501	.481	.685	6F	.1875	.514	3/4	15/64	.364	6-40(2)
21-2GT09-1A X 3/16	21	.526	.506	.710	6F	.1875	.514	3/4	15/64	.390	6-40(2)
22-2GT09-1A X 3/16	22	.551	.531	.740	6F	.1875	.514	3/4	15/64	.390	6-40(2)
24-2GT09-1A X 1/4	24	.602	.582	.790	6F	.2500	.514	13/16	19/64	.442	6-40(2)
28-2GT09-1A X 1/4	28	.702	.682	.895	6F	.2500	.514	13/16	19/64	.494	6-40(2)
30-2GT09-1A X 1/4	30	.752	.732	.945	6F	.2500	.514	13/16	19/64	.546	8-32(2)
32-2GT09-1A X 1/4	32	.802	.782	1.000	6F	.2500	.514	13/16	19/64	.598	8-32(2)
36-2GT09-1A X 1/4	36	.902	.882	1.105	6F	.2500	.514	13/16	19/64	.676	8-32(2)
40-2GT09-1A X 1/4	40	1.003	.983	1.210	6F	.2500	.530	27/32	5/16	.754	8-32(2)
42-2GT09-1A X 1/4	42	1.053	1.033	1.260	6F	.2500	.530	27/32	5/16	.806	8-32(2)
44-2GT09-1A X 1/4	44	1.103	1.083	1.315	6F	.2500	.530	27/32	5/16	.858	8-32(2)
48-2GT09-1A X 1/4	48	1.203	1.183	1.420	6F	.2500	.530	27/32	5/16	.936	8-32(2)
60-2GT09-1A X 1/4	60	1.504	1.484	1.730	6F	.2500	.530	27/32	5/16	1.222	8-32(2)
60-2GT09-2A X 1/4	60	1.504	1.484	-	6	.2500	.500	7/8	3/8	1.148	8-32(2)
72-2GT09-2A X 1/4	72	1.805	1.785	-	6	.2500	.500	7/8	3/8	1.195	8-32(2)
80-2GT09-2A X 5/16	80	2.005	1.985	-	6	.3125	.500	7/8	3/8	1.500	8-32(2)
90-2GT09-2A X 5/16	90	2.256	2.236	-	6	.3125	.500	7/8	3/8	1.500	8-32(2)
100-2GT09-2A X 5/16	100	2.506	2.486	-	6	.3125	.500	7/8	3/8	1.500	8-32(2)
120-2GT09-2A X 3/8	120	3.008	2.988	-	6	.3750	.500	7/8	3/8	1.500	10-32(2)

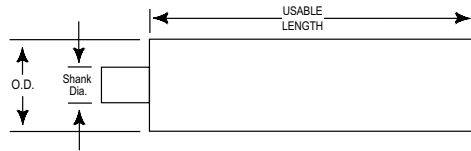
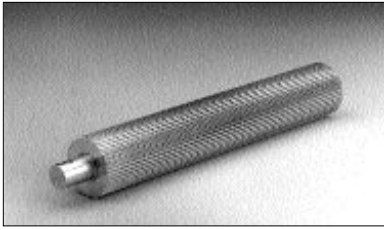
ALUMINUM 6061-T6 (RoHS compliant)



PART NUMBER	NO. OF GROOVES	PITCH DIA.	OUTSIDE DIA.	SHANK DIA.	USEABLE LENGTH
12-2GT-P-2A	12	.301	.281	5/16	2"
13-2GT-P-2A	13	.326	.306	3/8	2"
14-2GT-P-3A	14	.351	.331	3/8	3"
15-2GT-P-3A	15	.376	.356	7/16	3"
16-2GT-P-3A	16	.401	.381	7/16	3"
17-2GT-P-3A	17	.426	.406	7/16	3"
18-2GT-P-3A	18	.451	.431	1/2	3"
19-2GT-P-3A	19	.476	.456	1/2	3"
20-2GT-P-4A	20	.501	.481	3/8	4"
21-2GT-P-4A	21	.526	.506	3/8	4"
22-2GT-P-4A	22	.551	.531	3/8	4"
23-2GT-P-4A	23	.576	.556	3/8	4"
24-2GT-P-5A	24	.602	.582	1/2	5"
26-2GT-P-5A	26	.652	.632	1/2	5"
28-2GT-P-5A	28	.702	.682	1/2	5"
30-2GT-P-6A	30	.752	.732	1/2	6"
32-2GT-P-6A	32	.802	.782	1/2	6"
34-2GT-P-6A	34	.852	.832	1/2	6"
36-2GT-P-6A	36	.902	.882	1/2	6"
38-2GT-P-6A	38	.952	.932	1/2	6"

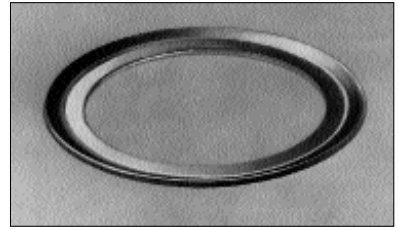
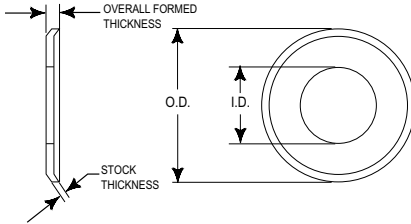


ALUMINUM 6061-T6 (RoHS compliant)



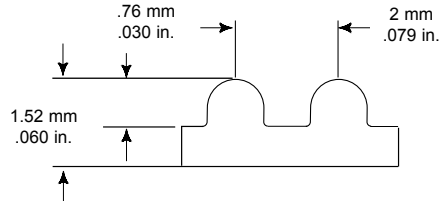
PART NUMBER	NO. OF GROOVES	PITCH DIA.	OUTSIDE DIA.	SHANK DIA.	USEABLE LENGTH
40-2GT-P-7A	40	1.003	.983	1/2	7"
42-2GT-P-7A	42	1.053	1.033	1/2	7"
43-2GT-P-7A	43	1.078	1.058	1/2	7"
44-2GT-P-7A	44	1.103	1.083	1/2	7"
45-2GT-P-7A	45	1.128	1.108	1/2	7"
46-2GT-P-7A	46	1.153	1.133	1/2	7"
48-2GT-P-7A	48	1.203	1.183	1/2	7"
49-2GT-P-7A	49	1.228	1.208	1/2	7"
52-2GT-P-7A	52	1.303	1.283	1/2	7"
55-2GT-P-7A	55	1.379	1.359	1/2	7"
56-2GT-P-7A	56	1.404	1.384	1/2	7"
60-2GT-P-8A	60	1.504	1.484	1/2	8"
65-2GT-P-8A	65	1.629	1.609	1/2	8"
70-2GT-P-8A	70	1.754	1.734	1/2	8"
72-2GT-P-8A	72	1.805	1.785	1/2	8"
75-2GT-P-8A	75	1.880	1.860	1/2	8"
80-2GT-P-8A	80	2.005	1.985	3/4	8"
90-2GT-P-8A	90	2.256	2.236	3/4	8"
96-2GT-P-8A	96	2.406	2.386	3/4	8"
100-2GT-P-8A	100	2.506	2.486	3/4	8"
110-2GT-P-8A	110	2.757	2.737	3/4	8"
120-2GT-P-8A	120	3.008	2.988	3/4	8"

ALUMINUM (RoHS compliant)



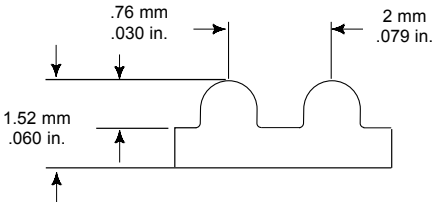
PART NUMBER	INSIDE DIA.	OUTSIDE DIA.	STOCK THICKNESS	OVERALL FORMED THICKNESS
10-2GT-F9A	.155	.425	.025	.045
11-2GT-F9A	.181	.450	.025	.045
12-2GT-F9A	.205	.480	.025	.045
13-2GT-F9A	.230	.505	.025	.045
14-2GT-F9A	.255	.530	.025	.045
15-2GT-F9A	.280	.555	.025	.045
16-2GT-F9A	.305	.580	.025	.045
18-2GT-F9A	.355	.635	.032	.052
20-2GT-F9A	.405	.685	.032	.052
21-2GT-F9A	.430	.710	.032	.052
22-2GT-F9A	.452	.740	.032	.052
24-2GT-F9A	.504	.790	.032	.052
25-2GT-F9A	.530	.815	.032	.052
26-2GT-F9A	.556	.840	.032	.052
28-2GT-F9A	.574	.895	.032	.052
30-2GT-F9A	.626	.945	.032	.052
32-2GT-F9A	.678	1.000	.032	.052
33-2GT-F9A	.704	1.025	.032	.052
34-2GT-F9A	.722	1.050	.032	.052
35-2GT-F9A	.748	1.080	.032	.052
36-2GT-F9A	.774	1.105	.032	.052
38-2GT-F9A	.826	1.155	.032	.052
40-2GT-F9A	.874	1.210	.040	.060
42-2GT-F9A	.926	1.260	.040	.060
44-2GT-F9A	.978	1.315	.040	.060
45-2GT-F9A	1.004	1.340	.040	.060
48-2GT-F9A	1.058	1.420	.040	.060
50-2GT-F9A	1.110	1.470	.040	.060
54-2GT-F9A	1.200	1.575	.040	.060
60-2GT-F9A	1.356	1.730	.040	.060

BLACK NEOPRENE, FIBERGLASS CORD (RoHS compliant)



BELT NUMBER	WIDTHS				PITCH LENGTH (MM)	NO. OF TEETH
	4MM	6MM	9MM	12MM		
54-2GT	04	06	09	12	54	27
60-2GT	04	06	09	12	60	30
66-2GT	04	06	09	12	66	33
72-2GT	04	06	09	12	72	36
74-2GT	04	06	09	12	74	37
76-2GT	04	06	09	12	76	38
78-2GT	04	06	09	12	78	39
80-2GT	04	06	09	12	80	40
82-2GT	04	06	09	12	82	41
84-2GT	04	06	09	12	84	42
86-2GT	04	06	09	12	86	43
88-2GT	04	06	09	12	88	44
90-2GT	04	06	09	12	90	45
92-2GT	04	06	09	12	92	46
94-2GT	04	06	09	12	94	47
96-2GT	04	06	09	12	96	48
98-2GT	04	06	09	12	98	49
100-2GT	04	06	09	12	100	50
102-2GT	04	06	09	12	102	51
106-2GT	04	06	09	12	106	53
108-2GT	04	06	09	12	108	54
110-2GT	04	06	09	12	110	55
112-2GT	04	06	09	12	112	56
114-2GT	04	06	09	12	114	57
116-2GT	04	06	09	12	116	58
118-2GT	04	06	09	12	118	59
120-2GT	04	06	09	12	120	60
122-2GT	04	06	09	12	122	61
124-2GT	04	06	09	12	124	62
126-2GT	04	06	09	12	126	63
128-2GT	04	06	09	12	128	64
130-2GT	04	06	09	12	130	65
132-2GT	04	06	09	12	132	66
134-2GT	04	06	09	12	134	67

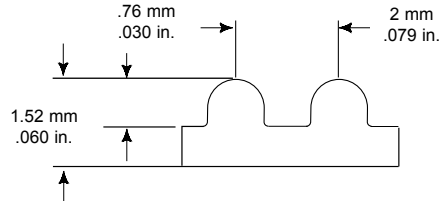
BLACK NEOPRENE, FIBERGLASS CORD (RoHS compliant)



BELT NUMBER	WIDTHS				PITCH LENGTH (MM)	NO. OF TEETH
	4MM	6MM	9MM	12MM		
136-2GT	04	06	09	12	136	68
138-2GT	04	06	09	12	138	69
140-2GT	04	06	09	12	140	70
142-2GT	04	06	09	12	142	71
144-2GT	04	06	09	12	144	72
146-2GT	04	06	09	12	146	73
148-2GT	04	06	09	12	148	74
150-2GT	04	06	09	12	150	75
152-2GT	04	06	09	12	152	76
154-2GT	04	06	09	12	154	77
156-2GT	04	06	09	12	156	78
158-2GT	04	06	09	12	158	79
160-2GT	04	06	09	12	160	80
164-2GT	04	06	09	12	164	82
166-2GT	04	06	09	12	166	83
168-2GT	04	06	09	12	168	84
172-2GT	04	06	09	12	172	86
174-2GT	04	06	09	12	174	87
176-2GT	04	06	09	12	176	88
178-2GT	04	06	09	12	178	89
180-2GT	04	06	09	12	180	90
182-2GT	04	06	09	12	182	91
184-2GT	04	06	09	12	184	92
186-2GT	04	06	09	12	186	93
188-2GT	04	06	09	12	188	94
190-2GT	04	06	09	12	190	95
192-2GT	04	06	09	12	192	96
194-2GT	04	06	09	12	194	97
196-2GT	04	06	09	12	196	98
200-2GT	04	06	09	12	200	100
202-2GT	04	06	09	12	202	101
204-2GT	04	06	09	12	204	102
206-2GT	04	06	09	12	206	103
208-2GT	04	06	09	12	208	104

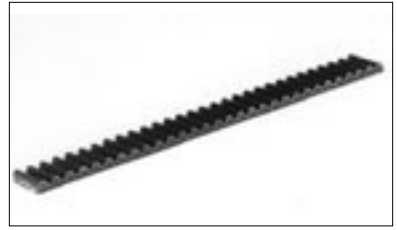
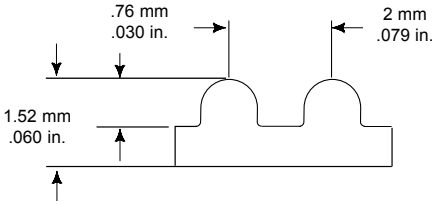


BLACK NEOPRENE, FIBERGLASS CORD (RoHS compliant)



BELT NUMBER	WIDTHS				PITCH LENGTH (MM)	NO. OF TEETH
	4MM	6MM	9MM	12MM		
210-2GT	04	06	09	12	210	105
212-2GT	04	06	09	12	212	106
214-2GT	04	06	09	12	214	107
216-2GT	04	06	09	12	216	108
220-2GT	04	06	09	12	220	110
224-2GT	04	06	09	12	224	112
226-2GT	04	06	09	12	226	113
228-2GT	04	06	09	12	228	114
230-2GT	04	06	09	12	230	115
232-2GT	04	06	09	12	232	116
236-2GT	04	06	09	12	236	118
240-2GT	04	06	09	12	240	120
242-2GT	04	06	09	12	242	121
244-2GT	04	06	09	12	244	122
248-2GT	04	06	09	12	248	124
250-2GT	04	06	09	12	250	125
252-2GT	04	06	09	12	252	126
254-2GT	04	06	09	12	254	127
256-2GT	04	06	09	12	256	128
258-2GT	04	06	09	12	258	129
260-2GT	04	06	09	12	260	130
264-2GT	04	06	09	12	264	132
266-2GT	04	06	09	12	266	133
268-2GT	04	06	09	12	268	134
270-2GT	04	06	09	12	270	135
274-2GT	04	06	09	12	274	137
278-2GT	04	06	09	12	278	139
280-2GT	04	06	09	12	280	140
282-2GT	04	06	09	12	282	141
284-2GT	04	06	09	12	284	142
286-2GT	04	06	09	12	286	143
288-2GT	04	06	09	12	288	144
290-2GT	04	06	09	12	290	145
292-2GT	04	06	09	12	292	146

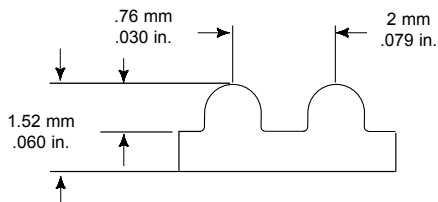
BLACK NEOPRENE, FIBERGLASS CORD (RoHS compliant)



BELT NUMBER	WIDTHS				PITCH LENGTH (MM)	NO. OF TEETH
	4MM	6MM	9MM	12MM		
294-2GT	04	06	09	12	294	147
300-2GT	04	06	09	12	300	150
302-2GT	04	06	09	12	302	151
304-2GT	04	06	09	12	304	152
308-2GT	04	06	09	12	308	154
310-2GT	04	06	09	12	310	155
314-2GT	04	06	09	12	314	157
318-2GT	04	06	09	12	318	159
320-2GT	04	06	09	12	320	160
322-2GT	04	06	09	12	322	161
324-2GT	04	06	09	12	324	162
326-2GT	04	06	09	12	326	163
328-2GT	04	06	09	12	328	164
330-2GT	04	06	09	12	330	165
332-2GT	04	06	09	12	332	166
336-2GT	04	06	09	12	336	168
338-2GT	04	06	09	12	338	169
340-2GT	04	06	09	12	340	170
342-2GT	04	06	09	12	342	171
344-2GT	04	06	09	12	344	172
346-2GT	04	06	09	12	346	173
350-2GT	04	06	09	12	350	175
352-2GT	04	06	09	12	352	176
354-2GT	04	06	09	12	354	177
356-2GT	04	06	09	12	356	178
358-2GT	04	06	09	12	358	179
360-2GT	04	06	09	12	360	180
364-2GT	04	06	09	12	364	182
366-2GT	04	06	09	12	366	183
370-2GT	04	06	09	12	370	185
372-2GT	04	06	09	12	372	186
376-2GT	04	06	09	12	376	188
380-2GT	04	06	09	12	380	190
382-2GT	04	06	09	12	382	191



BLACK NEOPRENE, FIBERGLASS CORD (RoHS compliant)

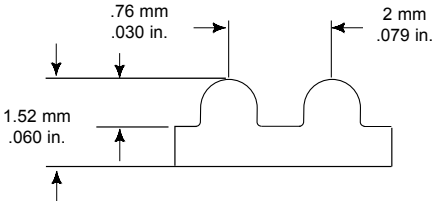


BELT NUMBER	WIDTHS				PITCH LENGTH (MM)	NO. OF TEETH
	4MM	6MM	9MM	12MM		
386-2GT	04	06	09	12	386	193
392-2GT	04	06	09	12	392	196
394-2GT	04	06	09	12	394	197
400-2GT	04	06	09	12	400	200
406-2GT	04	06	09	12	406	203
412-2GT	04	06	09	12	412	206
420-2GT	04	06	09	12	420	210
426-2GT	04	06	09	12	426	213
428-2GT	04	06	09	12	428	214
430-2GT	04	06	09	12	430	215
436-2GT	04	06	09	12	436	218
440-2GT	04	06	09	12	440	220
444-2GT	04	06	09	12	444	222
446-2GT	04	06	09	12	446	223
448-2GT	04	06	09	12	448	224
452-2GT	04	06	09	12	452	226
456-2GT	04	06	09	12	456	228
460-2GT	04	06	09	12	460	230
466-2GT	04	06	09	12	466	233
470-2GT	04	06	09	12	470	235
474-2GT	04	06	09	12	474	237
478-2GT	04	06	09	12	478	239
480-2GT	04	06	09	12	480	240
484-2GT	04	06	09	12	484	242
486-2GT	04	06	09	12	486	243
488-2GT	04	06	09	12	488	244
492-2GT	04	06	09	12	492	246
494-2GT	04	06	09	12	494	247
500-2GT	04	06	09	12	500	250
502-2GT	04	06	09	12	502	251
504-2GT	04	06	09	12	504	252
506-2GT	04	06	09	12	506	253
516-2GT	04	06	09	12	516	258
524-2GT	04	06	09	12	524	262

TIMING BELTS

2MM GT2 PITCH

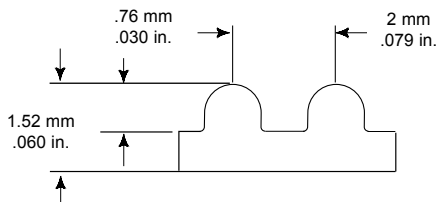
BLACK NEOPRENE, FIBERGLASS CORD (RoHS compliant)



BELT NUMBER	WIDTHS				PITCH LENGTH (MM)	NO. OF TEETH
	4MM	6MM	9MM	12MM		
528-2GT	04	06	09	12	528	264
530-2GT	04	06	09	12	530	265
534-2GT	04	06	09	12	534	267
544-2GT	04	06	09	12	544	272
550-2GT	04	06	09	12	550	275
552-2GT	04	06	09	12	552	276
558-2GT	04	06	09	12	558	279
560-2GT	04	06	09	12	560	280
570-2GT	04	06	09	12	570	285
572-2GT	04	06	09	12	572	286
576-2GT	04	06	09	12	576	288
578-2GT	04	06	09	12	578	289
580-2GT	04	06	09	12	580	290
586-2GT	04	06	09	12	586	293
598-2GT	04	06	09	12	598	299
600-2GT	04	06	09	12	600	300
606-2GT	04	06	09	12	606	303
616-2GT	04	06	09	12	616	308
630-2GT	04	06	09	12	630	315
634-2GT	04	06	09	12	634	317
640-2GT	04	06	09	12	640	320
646-2GT	04	06	09	12	646	323
660-2GT	04	06	09	12	660	330
670-2GT	04	06	09	12	670	335
676-2GT	04	06	09	12	676	338
690-2GT	04	06	09	12	690	345
696-2GT	04	06	09	12	696	348
702-2GT	04	06	09	12	702	351
726-2GT	04	06	09	12	726	363
742-2GT	04	06	09	12	742	371
744-2GT	04	06	09	12	744	372
752-2GT	04	06	09	12	752	376
760-2GT	04	06	09	12	760	380
772-2GT	04	06	09	12	772	386

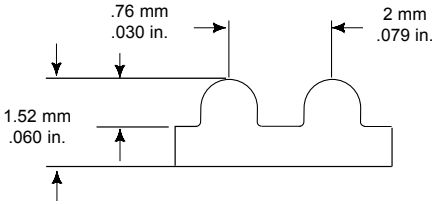


BLACK NEOPRENE, FIBERGLASS CORD (RoHS compliant)



BELT NUMBER	WIDTHS				PITCH LENGTH (MM)	NO. OF TEETH
	4MM	6MM	9MM	12MM		
782-2GT	04	06	09	12	782	391
800-2GT	04	06	09	12	800	400
810-2GT	04	06	09	12	810	405
816-2GT	04	06	09	12	816	408
848-2GT	04	06	09	12	848	424
852-2GT	04	06	09	12	852	426
860-2GT	04	06	09	12	860	430
866-2GT	04	06	09	12	866	433
892-2GT	04	06	09	12	892	446
900-2GT	04	06	09	12	900	450
930-2GT	04	06	09	12	930	465
950-2GT	04	06	09	12	950	475
956-2GT	04	06	09	12	956	478
976-2GT	04	06	09	12	976	488
994-2GT	04	06	09	12	994	497
1004-2GT	04	06	09	12	1004	502
1028-2GT	04	06	09	12	1028	514
1032-2GT	04	06	09	12	1032	516
1066-2GT	04	06	09	12	1066	533
1068-2GT	04	06	09	12	1068	534
1110-2GT	04	06	09	12	1110	555
1140-2GT	04	06	09	12	1140	570
1164-2GT	04	06	09	12	1164	582
1180-2GT	04	06	09	12	1180	590
1210-2GT	04	06	09	12	1210	605
1228-2GT	04	06	09	12	1228	614
1234-2GT	04	06	09	12	1234	617
1256-2GT	04	06	09	12	1256	628
1310-2GT	04	06	09	12	1310	655
1320-2GT	04	06	09	12	1320	660
1344-2GT	04	06	09	12	1344	672
1360-2GT	04	06	09	12	1360	680
1386-2GT	04	06	09	12	1386	693
1524-2GT	04	06	09	12	1524	762

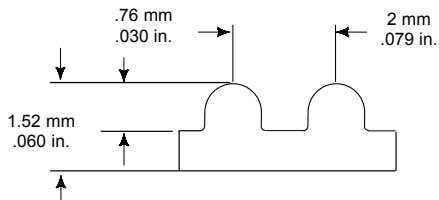
BLACK NEOPRENE, FIBERGLASS CORD (RoHS compliant)



BELT NUMBER	WIDTHS				PITCH LENGTH (MM)	NO. OF TEETH
	4MM	6MM	9MM	12MM		
1558-2GT	04	06	09	12	1558	779
1660-2GT	04	06	09	12	1660	830
1688-2GT	04	06	09	12	1688	844
1700-2GT	04	06	09	12	1700	850
1810-2GT	04	06	09	12	1810	905
1830-2GT	04	06	09	12	1830	915
1850-2GT	04	06	09	12	1850	925
1860-2GT	04	06	09	12	1860	930
1910-2GT	04	06	09	12	1910	955
2218-2GT	04	06	09	12	2218	1109

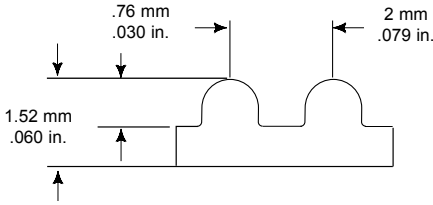


TRUMOTION, EPDM, FIBERGLASS CORD (RoHS compliant)



BELT NUMBER	WIDTHS				PITCH LENGTH (MM)	NO. OF TEETH
	4MM	6MM	9MM	12MM		
TM-96-2GT	04	06	09	12	96	48
TM-100-2GT	04	06	09	12	100	50
TM-112-2GT	04	06	09	12	112	56
TM-124-2GT	04	06	09	12	124	62
TM-126-2GT	04	06	09	12	126	63
TM-130-2GT	04	06	09	12	130	65
TM-132-2GT	04	06	09	12	132	66
TM-134-2GT	04	06	09	12	134	67
TM-136-2GT	04	06	09	12	136	68
TM-140-2GT	04	06	09	12	140	70
TM-152-2GT	04	06	09	12	152	76
TM-158-2GT	04	06	09	12	158	79
TM-160-2GT	04	06	09	12	160	80
TM-164-2GT	04	06	09	12	164	82
TM-166-2GT	04	06	09	12	166	83
TM-168-2GT	04	06	09	12	168	84
TM-172-2GT	04	06	09	12	172	86
TM-180-2GT	04	06	09	12	180	90
TM-186-2GT	04	06	09	12	186	93
TM-192-2GT	04	06	09	12	192	96
TM-200-2GT	04	06	09	12	200	100
TM-202-2GT	04	06	09	12	202	101
TM-208-2GT	04	06	09	12	208	104
TM-210-2GT	04	06	09	12	210	105
TM-212-2GT	04	06	09	12	212	106
TM-216-2GT	04	06	09	12	216	108
TM-220-2GT	04	06	09	12	220	110
TM-224-2GT	04	06	09	12	224	112
TM-236-2GT	04	06	09	12	236	118
TM-240-2GT	04	06	09	12	240	120
TM-250-2GT	04	06	09	12	250	125
TM-252-2GT	04	06	09	12	252	126
TM-258-2GT	04	06	09	12	258	129
TM-274-2GT	04	06	09	12	274	137

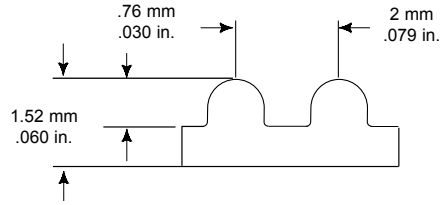
TRUMOTION, EPDM, FIBERGLASS CORD (RoHS compliant)



BELT NUMBER	WIDTHS				PITCH LENGTH (MM)	NO. OF TEETH
	4MM.	6MM	9MM	12MM		
TM-278-2GT	04	06	09	12	278	139
TM-280-2GT	04	06	09	12	280	140
TM-286-2GT	04	06	09	12	286	143
TM-300-2GT	04	06	09	12	300	150
TM-320-2GT	04	06	09	12	320	160
TM-322-2GT	04	06	09	12	322	161
TM-332-2GT	04	06	09	12	332	166
TM-342-2GT	04	06	09	12	342	171
TM-346-2GT	04	06	09	12	346	173
TM-350-2GT	04	06	09	12	350	175
TM-360-2GT	04	06	09	12	360	180
TM-364-2GT	04	06	09	12	364	182
TM-370-2GT	04	06	09	12	370	185
TM-380-2GT	04	06	09	12	380	190
TM-386-2GT	04	06	09	12	386	193
TM-400-2GT	04	06	09	12	400	200
TM-406-2GT	04	06	09	12	406	203
TM-420-2GT	04	06	09	12	420	210
TM-428-2GT	04	06	09	12	428	214
TM-456-2GT	04	06	09	12	456	228
TM-470-2GT	04	06	09	12	470	235
TM-474-2GT	04	06	09	12	474	237
TM-488-2GT	04	06	09	12	488	244
TM-504-2GT	04	06	09	12	504	252
TM-528-2GT	04	06	09	12	528	264
TM-552-2GT	04	06	09	12	552	276
TM-560-2GT	04	06	09	12	560	280
TM-576-2GT	04	06	09	12	576	288
TM-600-2GT	04	06	09	12	600	300
TM-640-2GT	04	06	09	12	640	320
TM-696-2GT	04	06	09	12	696	348
TM-744-2GT	04	06	09	12	744	372
TM-848-2GT	04	06	09	12	848	424
TM-956-2GT	04	06	09	12	956	478



TRUMOTION, EPDM, FIBERGLASS CORD (RoHS compliant)



BELT NUMBER	WIDTHS				PITCH LENGTH (MM)	NO. OF TEETH
	4MM	6MM	9MM	12MM		
TM-1164-2GT	04	06	09	12	1164	582
TM-1558-2GT	04	06	09	12	1558	779