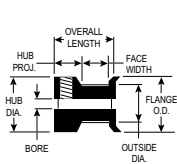
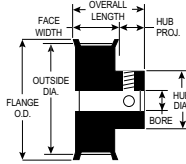


ALUMINUM WITH CLEAR ANODIZE (RoHS compliant)

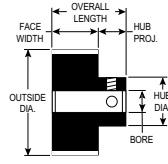
FOR BELTS UP TO 9MM WIDE



TYPE 6FC



TYPE 6F



TYPE 6

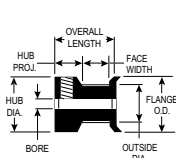


PART NUMBER	NO. OF GROOVES	PITCH DIA.	OUTSIDE DIA.	FLANGE O.D.	TYPE	BORE (+.001 / -.000)	FACE WIDTH	OVERALL LENGTH	HUB DIA.	SET SCREWS (2@90°)
16-3GT09-6A X 1/8	16	.602	.572	.710	6FC	.1250	.401	.691	.710	6-40
17-3GT09-6A X 1/8	17	.639	.609	.740	6FC	.1250	.401	.691	.740	6-40
18-3GT09-1A X 3/16	18	.677	.647	.790	6F	.1875	.506	.821	.442	4-40
19-3GT09-1A X 3/16	19	.714	.684	.827	6F	.1875	.506	.821	.479	4-40
20-3GT09-1A X 3/16	20	.752	.722	.895	6F	.1875	.506	.821	.500	4-40
21-3GT09-1A X 3/16	21	.790	.760	.895	6F	.1875	.506	.821	.500	4-40
22-3GT09-1A X 3/16	22	.827	.797	.945	6F	.1875	.506	.821	.562	4-40
24-3GT09-1A X 1/4	24	.902	.872	1.025	6F	.2500	.506	.821	.625	6-40
25-3GT09-1A X 1/4	25	.940	.910	1.060	6F	.2500	.506	.821	.625	6-40
26-3GT09-1A X 1/4	26	.977	.947	1.105	6F	.2500	.506	.821	.625	6-40
28-3GT09-1A X 1/4	28	1.053	1.023	1.173	6F	.2500	.506	.821	.701	6-40
30-3GT09-1A X 1/4	30	1.128	1.098	1.250	6F	.2500	.506	.821	.776	8-32
32-3GT09-1A X 1/4	32	1.203	1.173	1.323	6F	.2500	.506	.821	.851	8-32
34-3GT09-1A X 1/4	34	1.278	1.248	1.398	6F	.2500	.527	.833	.921	8-32
36-3GT09-1A X 1/4	36	1.353	1.323	1.478	6F	.2500	.527	.833	1.000	8-32
38-3GT09-1A X 1/4	38	1.429	1.399	1.549	6F	.2500	.527	.833	1.075	8-32
40-3GT09-1A X 1/4	40	1.504	1.474	1.625	6F	.2500	.527	.833	1.150	8-32
42-3GT09-1A X 1/4	42	1.579	1.549	1.730	6F	.2500	.527	.833	1.150	8-32
44-3GT09-1A X 1/4	44	1.654	1.624	1.775	6F	.2500	.527	.833	1.250	8-32
45-3GT09-1A X 1/4	45	1.692	1.662	1.775	6F	.2500	.527	.833	1.250	8-32
48-3GT09-2A X 5/16	48	1.805	1.775	-	6	.3125	.500	.875	1.250	8-32
50-3GT09-2A X 5/16	50	1.880	1.850	-	6	.3125	.500	.875	1.250	8-32
56-3GT09-2A X 5/16	56	2.105	2.075	-	6	.3125	.500	.875	1.250	8-32
60-3GT09-2A X 5/16	60	2.256	2.226	-	6	.3125	.500	.875	1.250	8-32
62-3GT09-2A X 5/16	62	2.331	2.301	-	6	.3125	.500	.875	1.250	8-32
68-3GT09-2A X 5/16	68	2.557	2.527	-	6	.3125	.500	.875	1.250	8-32
72-3GT09-2A X 5/16	72	2.707	2.677	-	6	.3125	.500	.875	1.250	8-32
74-3GT09-2A X 5/16	74	2.782	2.752	-	6	.3125	.500	.875	1.250	8-32
80-3GT09-2A X 5/16	80	3.008	2.978	-	6	.3125	.500	.875	1.250	8-32

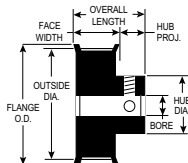


ALUMINUM WITH CLEAR ANODIZE (RoHS compliant)

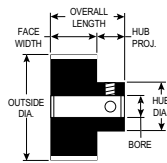
FOR BELTS UP TO 15MM WIDE



TYPE 6FC



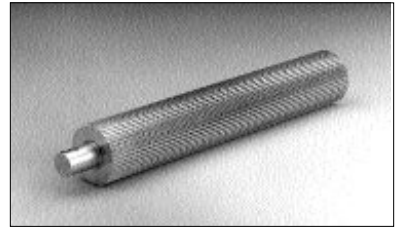
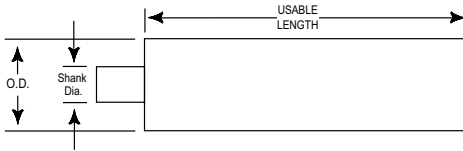
TYPE 6F



TYPE 6

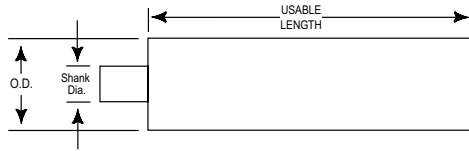
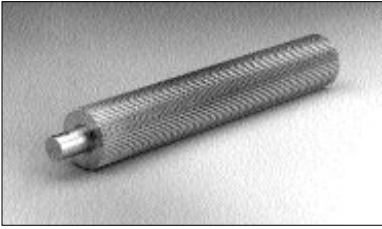
PART NUMBER	NO. OF GROOVES	PITCH DIA.	OUTSIDE DIA.	FLANGE O.D.	TYPE	BORE (+.001 / -.000)	FACE WIDTH	OVERALL LENGTH	HUB DIA.	SET SCREWS (2@90°)
16-3GT15-6A X 1/8	16	.602	.572	.710	6FC	.1250	.637	.927	.710	6-40
17-3GT15-6A X 1/8	17	.639	.609	.740	6FC	.1250	.637	.927	.740	6-40
18-3GT15-1A X 3/16	18	.677	.647	.790	6F	.1875	.742	1.057	.442	4-40
19-3GT15-1A X 3/16	19	.714	.684	.827	6F	.1875	.742	1.057	.479	4-40
20-3GT15-1A X 3/16	20	.752	.722	.895	6F	.1875	.742	1.057	.500	4-40
21-3GT15-1A X 3/16	21	.790	.760	.895	6F	.1875	.742	1.057	.500	4-40
22-3GT15-1A X 3/16	22	.827	.797	.945	6F	.1875	.742	1.057	.562	4-40
24-3GT15-1A X 1/4	24	.902	.872	1.025	6F	.2500	.742	1.057	.625	6-40
25-3GT15-1A X 1/4	25	.940	.910	1.060	6F	.2500	.742	1.057	.625	6-40
26-3GT15-1A X 1/4	26	.977	.947	1.105	6F	.2500	.742	1.057	.625	6-40
28-3GT15-1A X 1/4	28	1.053	1.023	1.173	6F	.2500	.742	1.057	.701	6-40
30-3GT15-1A X 1/4	30	1.128	1.098	1.250	6F	.2500	.742	1.057	.776	8-32
32-3GT15-1A X 1/4	32	1.203	1.173	1.323	6F	.2500	.742	1.057	.851	8-32
34-3GT15-1A X 1/4	34	1.278	1.248	1.398	6F	.2500	.763	1.069	.921	8-32
36-3GT15-1A X 1/4	36	1.353	1.323	1.478	6F	.2500	.763	1.069	1.000	8-32
38-3GT15-1A X 1/4	38	1.429	1.399	1.549	6F	.2500	.763	1.069	1.075	8-32
40-3GT15-1A X 1/4	40	1.504	1.474	1.625	6F	.2500	.763	1.069	1.150	8-32
42-3GT15-1A X 1/4	42	1.579	1.549	1.730	6F	.2500	.763	1.069	1.150	8-32
44-3GT15-1A X 1/4	44	1.654	1.624	1.775	6F	.2500	.763	1.069	1.250	8-32
45-3GT15-1A X 1/4	45	1.692	1.662	1.775	6F	.2500	.763	1.069	1.250	8-32
48-3GT15-2A X 5/16	48	1.805	1.775	-	6	.3125	.736	1.111	1.250	8-32
50-3GT15-2A X 5/16	50	1.880	1.850	-	6	.3125	.736	1.111	1.250	8-32
56-3GT15-2A X 5/16	56	2.105	2.075	-	6	.3125	.736	1.111	1.250	8-32
60-3GT15-2A X 5/16	60	2.256	2.226	-	6	.3125	.736	1.111	1.250	8-32
62-3GT15-2A X 5/16	62	2.331	2.301	-	6	.3125	.736	1.111	1.250	8-32
68-3GT15-2A X 5/16	68	2.557	2.527	-	6	.3125	.736	1.111	1.250	8-32
72-3GT15-2A X 5/16	72	2.707	2.677	-	6	.3125	.736	1.111	1.250	8-32
74-3GT15-2A X 5/16	74	2.782	2.752	-	6	.3125	.736	1.111	1.250	8-32
80-3GT15-2A X 5/16	80	3.008	2.978	-	6	.3125	.736	1.111	1.250	8-32

ALUMINUM 6061-T6 (RoHS compliant)



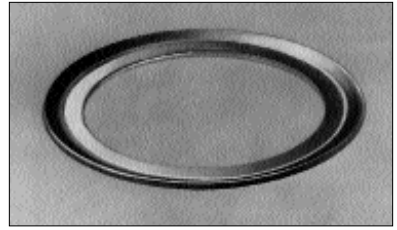
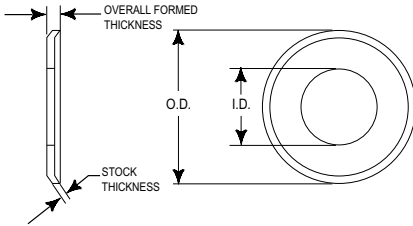
PART NUMBER	NO. OF GROOVES	PITCH DIA.	OUTSIDE DIA.	SHANK DIA.	USEABLE LENGTH
16-3GT-P-5A	16	.602	.572	1/2	5"
17-3GT-P-5A	17	.639	.609	1/2	5"
18-3GT-P-5A	18	.677	.647	1/2	5"
19-3GT-P-5A	19	.714	.684	1/2	5"
20-3GT-P-6A	20	.752	.722	1/2	6"
21-3GT-P-6A	21	.790	.760	1/2	6"
22-3GT-P-6A	22	.827	.797	1/2	6"
23-3GT-P-6A	23	.865	.835	1/2	6"
24-3GT-P-6A	24	.902	.872	1/2	6"
25-3GT-P-6A	25	.940	.910	1/2	6"
26-3GT-P-6A	26	.977	.947	1/2	6"
27-3GT-P-6A	27	1.015	.985	1/2	6"
28-3GT-P-6A	28	1.053	1.023	1/2	6"
30-3GT-P-7A	30	1.128	1.098	1/2	7"
31-3GT-P-7A	31	1.165	1.135	1/2	7"
32-3GT-P-7A	32	1.203	1.173	1/2	7"
33-3GT-P-7A	33	1.241	1.211	1/2	7"
34-3GT-P-7A	34	1.278	1.248	1/2	7"
35-3GT-P-7A	35	1.316	1.286	1/2	7"
36-3GT-P-8A	36	1.353	1.323	1/2	8"
38-3GT-P-8A	38	1.429	1.399	1/2	8"
40-3GT-P-8A	40	1.504	1.474	1/2	8"
41-3GT-P-8A	41	1.541	1.511	1/2	8"
42-3GT-P-8A	42	1.579	1.549	1/2	8"
43-3GT-P-8A	43	1.617	1.587	1/2	8"
44-3GT-P-8A	44	1.654	1.624	1/2	8"
45-3GT-P-8A	45	1.692	1.662	1/2	8"
46-3GT-P-8A	46	1.729	1.699	1/2	8"

ALUMINUM 6061-T6 (RoHS compliant)



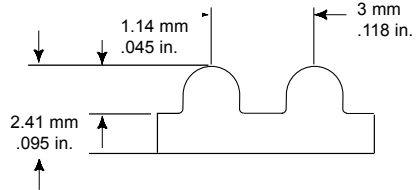
PART NUMBER	NO. OF GROOVES	PITCH DIA.	OUTSIDE DIA.	SHANK DIA.	USEABLE LENGTH
48-3GT-P-8A	48	1.805	1.775	1/2	8"
49-3GT-P-8A	49	1.842	1.812	1/2	8"
50-3GT-P-8A	50	1.880	1.850	3/4	8"
52-3GT-P-8A	52	1.955	1.925	3/4	8"
54-3GT-P-8A	54	2.030	2.000	3/4	8"
55-3GT-P-8A	55	2.068	2.038	3/4	8"
56-3GT-P-8A	56	2.105	2.075	3/4	8"
58-3GT-P-8A	58	2.181	2.151	3/4	8"
60-3GT-P-8A	60	2.256	2.226	3/4	8"
62-3GT-P-8A	62	2.331	2.301	3/4	8"
64-3GT-P-8A	64	2.406	2.376	3/4	8"
65-3GT-P-8A	65	2.444	2.414	3/4	8"
66-3GT-P-8A	66	2.481	2.451	3/4	8"
68-3GT-P-8A	68	2.557	2.527	3/4	8"
70-3GT-P-8A	70	2.632	2.602	3/4	8"
72-3GT-P-8A	72	2.707	2.677	3/4	8"
75-3GT-P-8A	75	2.820	2.790	3/4	8"
80-3GT-P-8A	80	3.008	2.978	3/4	8"
82-3GT-P-8A	82	3.083	3.053	3/4	8"
84-3GT-P-8A	84	3.158	3.128	3/4	8"
88-3GT-P-8A	88	3.308	3.278	3/4	8"
90-3GT-P-8A	90	3.384	3.354	3/4	8"
92-3GT-P-8A	92	3.459	3.429	3/4	8"
96-3GT-P-8A	96	3.609	3.579	3/4	8"
100-3GT-P-8A	100	3.760	3.730	1	8"
110-3GT-P-8A	110	4.136	4.106	1	8"
120-3GT-P-8A	120	4.511	4.481	1	8"
130-3GT-P-8A	130	4.887	4.857	1	8"
140-3GT-P-8A	140	5.263	5.233	1	8"
150-3GT-P-8A	150	5.639	5.609	1	8"
160-3GT-P-8A	160	6.015	5.985	1	8"

ALUMINUM (RoHS compliant)



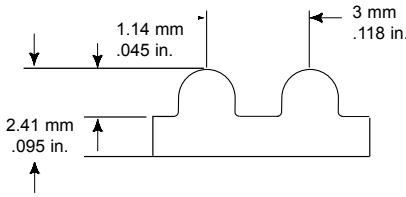
PART NUMBER	INSIDE DIA.	OUTSIDE DIA.	STOCK THICKNESS	OVERALL FORMED THICKNESS
16-3GT-F10A	.452	.710	.032	.052
17-3GT-F10A	.452	.740	.032	.052
18-3GT-F10A	.504	.790	.032	.052
19-3GT-F10A	.541	.827	.032	.052
20-3GT-F10A	.574	.895	.032	.052
22-3GT-F10A	.626	.945	.032	.052
24-3GT-F10A	.704	1.025	.032	.052
25-3GT-F10A	.738	1.060	.032	.052
26-3GT-F10A	.774	1.105	.032	.052
28-3GT-F10A	.849	1.173	.032	.052
30-3GT-F10A	.924	1.250	.032	.052
32-3GT-F10A	.999	1.323	.032	.052
34-3GT-F10A	1.074	1.398	.040	.060
36-3GT-F10A	1.149	1.478	.040	.060
38-3GT-F10A	1.225	1.549	.040	.060
40-3GT-F10A	1.300	1.625	.040	.060
42-3GT-F10A	1.356	1.730	.040	.060
44-3GT-F10A	1.450	1.775	.040	.060
45-3GT-F10A	1.450	1.775	.040	.060

BLACK NEOPRENE, FIBERGLASS CORD (RoHS compliant)



BELT NUMBER	WIDTHS				PITCH LENGTH (MM)	NO. OF TEETH
	6MM	9MM	12MM	15MM		
99-3GT	06	09	12	15	99	33
105-3GT	06	09	12	15	105	35
111-3GT	06	09	12	15	111	37
120-3GT	06	09	12	15	120	40
123-3GT	06	09	12	15	123	41
129-3GT	06	09	12	15	129	43
135-3GT	06	09	12	15	135	45
144-3GT	06	09	12	15	144	48
150-3GT	06	09	12	15	150	50
159-3GT	06	09	12	15	159	53
165-3GT	06	09	12	15	165	55
174-3GT	06	09	12	15	174	58
177-3GT	06	09	12	15	177	59
180-3GT	06	09	12	15	180	60
183-3GT	06	09	12	15	183	61
186-3GT	06	09	12	15	186	62
189-3GT	06	09	12	15	189	63
192-3GT	06	09	12	15	192	64
195-3GT	06	09	12	15	195	65
201-3GT	06	09	12	15	201	67
204-3GT	06	09	12	15	204	68
210-3GT	06	09	12	15	210	70
216-3GT	06	09	12	15	216	72
219-3GT	06	09	12	15	219	73
225-3GT	06	09	12	15	225	75
231-3GT	06	09	12	15	231	77
234-3GT	06	09	12	15	234	78
240-3GT	06	09	12	15	240	80
243-3GT	06	09	12	15	243	81
246-3GT	06	09	12	15	246	82
252-3GT	06	09	12	15	252	84
255-3GT	06	09	12	15	255	85
267-3GT	06	09	12	15	267	89
270-3GT	06	09	12	15	270	90
276-3GT	06	09	12	15	276	92

BLACK NEOPRENE, FIBERGLASS CORD (RoHS compliant)



BELT NUMBER	WIDTHS				PITCH LENGTH (MM)	NO. OF TEETH
	6MM	9MM	12MM	15MM		
282-3GT	06	09	12	15	282	94
285-3GT	06	09	12	15	285	95
288-3GT	06	09	12	15	288	96
291-3GT	06	09	12	15	291	97
294-3GT	06	09	12	15	294	98
300-3GT	06	09	12	15	300	100
303-3GT	06	09	12	15	303	101
309-3GT	06	09	12	15	309	103
312-3GT	06	09	12	15	312	104
324-3GT	06	09	12	15	324	108
330-3GT	06	09	12	15	330	110
339-3GT	06	09	12	15	339	113
348-3GT	06	09	12	15	348	116
354-3GT	06	09	12	15	354	118
357-3GT	06	09	12	15	357	119
360-3GT	06	09	12	15	360	120
363-3GT	06	09	12	15	363	121
375-3GT	06	09	12	15	375	125
384-3GT	06	09	12	15	384	128
387-3GT	06	09	12	15	387	129
390-3GT	06	09	12	15	390	130
393-3GT	06	09	12	15	393	131
399-3GT	06	09	12	15	399	133
408-3GT	06	09	12	15	408	136
414-3GT	06	09	12	15	414	138
420-3GT	06	09	12	15	420	140
426-3GT	06	09	12	15	426	142
444-3GT	06	09	12	15	444	148
447-3GT	06	09	12	15	447	149
450-3GT	06	09	12	15	450	150
456-3GT	06	09	12	15	456	152
474-3GT	06	09	12	15	474	158
480-3GT	06	09	12	15	480	160
483-3GT	06	09	12	15	483	161
489-3GT	06	09	12	15	489	163

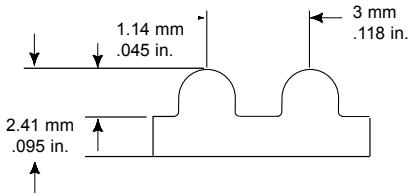


BLACK NEOPRENE, FIBERGLASS CORD (RoHS compliant)



BELT NUMBER	WIDTHS				PITCH LENGTH (MM)	NO. OF TEETH
	6MM	9MM	12MM	15MM		
495-3GT	06	09	12	15	495	165
501-3GT	06	09	12	15	501	167
504-3GT	06	09	12	15	504	168
510-3GT	06	09	12	15	510	170
513-3GT	06	09	12	15	513	171
522-3GT	06	09	12	15	522	174
537-3GT	06	09	12	15	537	179
540-3GT	06	09	12	15	540	180
552-3GT	06	09	12	15	552	184
561-3GT	06	09	12	15	561	187
564-3GT	06	09	12	15	564	188
570-3GT	06	09	12	15	570	190
582-3GT	06	09	12	15	582	194
588-3GT	06	09	12	15	588	196
600-3GT	06	09	12	15	600	200
621-3GT	06	09	12	15	621	207
630-3GT	06	09	12	15	630	210
657-3GT	06	09	12	15	657	219
684-3GT	06	09	12	15	684	228
696-3GT	06	09	12	15	696	232
735-3GT	06	09	12	15	735	245
750-3GT	06	09	12	15	750	250
786-3GT	06	09	12	15	786	262
840-3GT	06	09	12	15	840	280
849-3GT	06	09	12	15	849	283
897-3GT	06	09	12	15	897	299
945-3GT	06	09	12	15	945	315
1050-3GT	06	09	12	15	1050	350
1080-3GT	06	09	12	15	1080	360
1272-3GT	06	09	12	15	1272	424
1536-3GT	06	09	12	15	1536	512
1587-3GT	06	09	12	15	1587	529
1692-3GT	06	09	12	15	1692	564
2061-3GT	06	09	12	15	2061	687

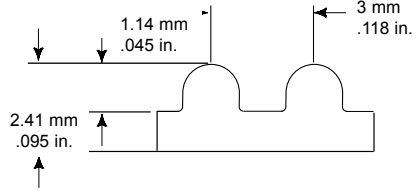
TRUMOTION, EPDM, FIBERGLASS CORD (RoHS compliant)



BELT NUMBER	WIDTHS				PITCH LENGTH (MM)	NO. OF TEETH
	6MM	9MM	12MM	15MM		
TM-99-3GT	06	09	12	15	99	33
TM-111-3GT	06	09	12	15	111	37
TM-123-3GT	06	09	12	15	123	41
TM-129-3GT	06	09	12	15	129	43
TM-135-3GT	06	09	12	15	135	45
TM-150-3GT	06	09	12	15	150	50
TM-159-3GT	06	09	12	15	159	53
TM-177-3GT	06	09	12	15	177	59
TM-180-3GT	06	09	12	15	180	60
TM-183-3GT	06	09	12	15	183	61
TM-189-3GT	06	09	12	15	189	63
TM-201-3GT	06	09	12	15	201	67
TM-210-3GT	06	09	12	15	210	70
TM-219-3GT	06	09	12	15	219	73
TM-225-3GT	06	09	12	15	225	75
TM-240-3GT	06	09	12	15	240	80
TM-243-3GT	06	09	12	15	243	81
TM-252-3GT	06	09	12	15	252	84
TM-255-3GT	06	09	12	15	255	85
TM-267-3GT	06	09	12	15	267	89
TM-282-3GT	06	09	12	15	282	94
TM-291-3GT	06	09	12	15	291	97
TM-300-3GT	06	09	12	15	300	100
TM-339-3GT	06	09	12	15	339	113
TM-348-3GT	06	09	12	15	348	116
TM-357-3GT	06	09	12	15	357	119
TM-360-3GT	06	09	12	15	360	120
TM-375-3GT	06	09	12	15	375	125
TM-390-3GT	06	09	12	15	390	130
TM-393-3GT	06	09	12	15	393	131
TM-414-3GT	06	09	12	15	414	138
TM-420-3GT	06	09	12	15	420	140
TM-444-3GT	06	09	12	15	444	148
TM-447-3GT	06	09	12	15	447	149



TRUMOTION, EPDM, FIBERGLASS CORD (RoHS compliant)



BELT NUMBER	WIDTHS				PITCH LENGTH (MM)	NO. OF TEETH
	6MM	9MM	12MM	15MM		
TM-474-3GT	06	09	12	15	474	158
TM-480-3GT	06	09	12	15	480	160
TM-483-3GT	06	09	12	15	483	161
TM-489-3GT	06	09	12	15	489	163
TM-504-3GT	06	09	12	15	504	168
TM-510-3GT	06	09	12	15	510	170
TM-537-3GT	06	09	12	15	537	179
TM-552-3GT	06	09	12	15	552	184
TM-564-3GT	06	09	12	15	564	188
TM-600-3GT	06	09	12	15	600	200
TM-630-3GT	06	09	12	15	630	210
TM-684-3GT	06	09	12	15	684	228
TM-696-3GT	06	09	12	15	696	232
TM-735-3GT	06	09	12	15	735	245
TM-750-3GT	06	09	12	15	750	250
TM-786-3GT	06	09	12	15	786	262
TM-840-3GT	06	09	12	15	840	280
TM-945-3GT	06	09	12	15	945	315
TM-1050-3GT	06	09	12	15	1050	350
TM-1080-3GT	06	09	12	15	1080	360
TM-1272-3GT	06	09	12	15	1272	424
TM-1536-3GT	06	09	12	15	1536	512
TM-1587-3GT	06	09	12	15	1587	529
TM-2061-3GT	06	09	12	15	2061	687