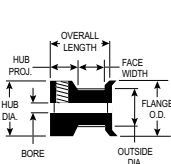
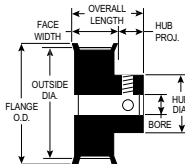


ALUMINUM WITH CLEAR ANODIZE (RoHS compliant)

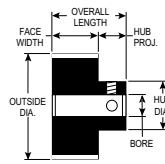
FOR BELTS UP TO 6MM WIDE



TYPE 6FC



TYPE 6F



TYPE 6

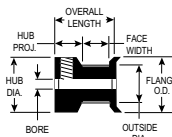


PART NUMBER	NO. OF GROOVES	PITCH DIA.	OUTSIDE DIA.	FLANGE O.D.	TYPE	BORE (+.001 / -.000)	FACE WIDTH	OVERALL LENGTH	HUB DIA.	SET SCREWS
10-3M-06 X 1/8	10	.376	.346	.505	6FC	.1250	.282	9/16	.505	4-40(1)
12-3M-06 X 3/16	12	.451	.421	.580	6FC	.1875	.282	9/16	.580	6-40(1)
14-3M-06 X 3/16	14	.526	.496	.635	6FC	.1875	.282	9/16	.635	6-40(2)
15-3M-06 X 3/16	15	.564	.534	.685	6FC	.1875	.282	9/16	.685	6-40(2)
16-3M-06 X 3/16	16	.602	.572	.710	6FC	.1875	.282	9/16	.710	6-40(2)
17-3M-06 X 3/16	17	.639	.609	.740	6FC	.1875	.282	9/16	.740	6-40(2)
18-3M-06 X 1/4	18	.677	.647	.790	6F	.2500	.386	11/16	.442	8-32(2)
19-3M-06 X 1/4	19	.714	.684	.827	6F	.2500	.386	11/16	.468	8-32(2)
20-3M-06 X 1/4	20	.752	.722	.895	6F	.2500	.386	11/16	.500	8-32(2)
22-3M-06 X 1/4	22	.827	.797	.945	6F	.2500	.386	11/16	.562	8-32(2)
24-3M-06 X 1/4	24	.902	.872	1.025	6F	.2500	.386	11/16	.625	8-32(2)
26-3M-06 X 1/4	26	.977	.947	1.105	6F	.2500	.386	11/16	.625	8-32(2)
28-3M-06 X 1/4	28	1.053	1.023	1.173	6F	.2500	.386	11/16	.701	8-32(2)
30-3M-06 X 1/4	30	1.128	1.098	1.250	6F	.2500	.386	11/16	.776	8-32(2)
32-3M-06 X 1/4	32	1.203	1.173	1.323	6F	.2500	.386	11/16	.851	8-32(2)
34-3M-06 X 1/4	34	1.278	1.248	1.398	6F	.2500	.407	23/32	.921	8-32(2)
36-3M-06 X 1/4	36	1.353	1.324	1.473	6F	.2500	.407	23/32	1.000	8-32(2)
38-3M-06 X 1/4	38	1.429	1.399	1.549	6F	.2500	.407	23/32	1.075	8-32(2)
40-3M-06 X 1/4	40	1.504	1.474	1.625	6F	.2500	.407	23/32	1.150	8-32(2)
44-3M-06 X 1/4	44	1.654	1.624	1.775	6F	.2500	.407	23/32	1.300	8-32(2)
50-3M-06 X 5/16	50	1.880	1.850	—	6	.3125	.407	47/64	1.250	8-32(2)
56-3M-06 X 5/16	56	2.105	2.075	—	6	.3125	.407	47/64	1.250	8-32(2)
62-3M-06 X 5/16	62	2.331	2.301	—	6	.3125	.407	47/64	1.250	8-32(2)
72-3M-06 X 5/16	72	2.707	2.677	—	6	.3125	.407	47/64	1.250	8-32(2)

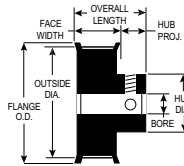


ALUMINUM WITH CLEAR ANODIZE (RoHS compliant)

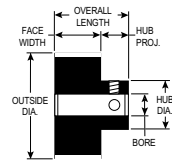
FOR BELTS UP TO 9MM WIDE



TYPE 6FC



TYPE 6F



TYPE 6

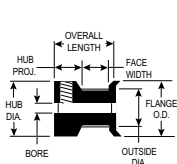
PART NUMBER	NO. OF GROOVES	PITCH DIA.	OUTSIDE DIA.	FLANGE O.D.	TYPE	(+.001) (-.000)	FACE WIDTH	OVERALL LENGTH	HUB DIA.	SET SCREWS
10-3M-09 X 1/8	10	.376	.346	.505	6FC	.1250	.401	11/16	.505	4-40(1)
12-3M-09 X 3/16	12	.451	.421	.580	6FC	.1875	.401	11/16	.580	6-40(1)
14-3M-09 X 3/16	14	.526	.496	.635	6FC	.1875	.401	11/16	.635	6-40(2)
15-3M-09 X 3/16	15	.564	.534	.685	6FC	.1875	.401	11/16	.685	6-40(2)
16-3M-09 X 3/16	16	.602	.572	.710	6FC	.1875	.401	11/16	.710	6-40(2)
17-3M-09 X 3/16	17	.639	.609	.740	6FC	.1875	.401	11/16	.740	6-40(2)
18-3M-09 X 1/4	18	.677	.647	.790	6F	.2500	.506	13/16	.442	8-32(2)
19-3M-09 X 1/4	19	.714	.684	.827	6F	.2500	.506	13/16	.468	8-32(2)
20-3M-09 X 1/4	20	.752	.722	.895	6F	.2500	.506	13/16	.500	8-32(2)
22-3M-09 X 1/4	22	.827	.797	.945	6F	.2500	.506	13/16	.562	8-32(2)
24-3M-09 X 1/4	24	.902	.872	1.025	6F	.2500	.506	13/16	.625	8-32(2)
26-3M-09 X 1/4	26	.977	.947	1.105	6F	.2500	.506	13/16	.625	8-32(2)
28-3M-09 X 1/4	28	1.053	1.023	1.173	6F	.2500	.506	13/16	.701	8-32(2)
30-3M-09 X 1/4	30	1.128	1.098	1.250	6F	.2500	.506	13/16	.776	8-32(2)
32-3M-09 X 1/4	32	1.203	1.173	1.323	6F	.2500	.506	13/16	.851	8-32(2)
34-3M-09 X 1/4	34	1.278	1.248	1.398	6F	.2500	.527	27/32	.921	8-32(2)
36-3M-09 X 1/4	36	1.353	1.324	1.473	6F	.2500	.527	27/32	1.000	8-32(2)
38-3M-09 X 1/4	38	1.429	1.399	1.549	6F	.2500	.527	27/32	1.075	8-32(2)
40-3M-09 X 1/4	40	1.504	1.474	1.625	6F	.2500	.527	27/32	1.150	8-32(2)
44-3M-09 X 1/4	44	1.654	1.624	1.775	6F	.2500	.527	27/32	1.300	8-32(2)
50-3M-09 X 5/16	50	1.880	1.850	—	6	.3125	.500	7/8	1.250	8-32(2)
56-3M-09 X 5/16	56	2.105	2.075	—	6	.3125	.500	7/8	1.250	8-32(2)
62-3M-09 X 5/16	62	2.331	2.301	—	6	.3125	.500	7/8	1.250	8-32(2)
72-3M-09 X 5/16	72	2.707	2.677	—	6	.3125	.500	7/8	1.250	8-32(2)

TIMING BELT PULLEYS

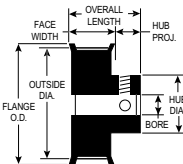
3MM HTD PITCH

ALUMINUM WITH CLEAR ANODIZE (RoHS compliant)

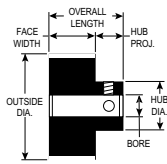
FOR BELTS UP TO 15MM WIDE



TYPE 6FC



TYPE 6F



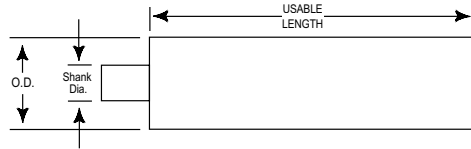
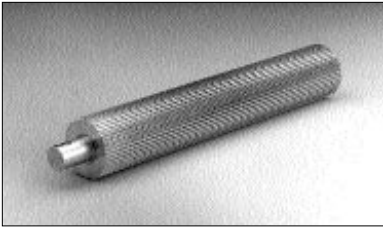
TYPE 6



PART NUMBER	NO. OF GROOVES	PITCH DIA.	OUTSIDE DIA.	FLANGE O.D.	TYPE	(+001 / -000)	FACE WIDTH	OVERALL LENGTH	HUB DIA.	SET SCREWS
10-3M-15 X 1/8	10	.376	.346	.505	6FC	.1250	.637	.927	.505	4-40(1)
12-3M-15 X 3/16	12	.451	.421	.580	6FC	.1875	.637	.927	.580	6-40(1)
14-3M-15 X 3/16	14	.526	.496	.635	6FC	.1875	.637	.927	.635	6-40(2)
15-3M-15 X 3/16	15	.564	.534	.685	6FC	.1875	.637	.927	.685	6-40(2)
16-3M-15 X 3/16	16	.602	.572	.710	6FC	.1875	.637	.927	.710	6-40(2)
17-3M-15 X 3/16	17	.639	.609	.740	6FC	.1875	.637	.927	.740	6-40(2)
18-3M-15 X 1/4	18	.677	.647	.790	6F	.2500	.742	1.057	.442	8-32(2)
19-3M-15 X 1/4	19	.714	.684	.827	6F	.2500	.742	1.057	.468	8-32(2)
20-3M-15 X 1/4	20	.752	.722	.895	6F	.2500	.742	1.057	.500	8-32(2)
22-3M-15 X 1/4	22	.827	.797	.945	6F	.2500	.742	1.057	.562	8-32(2)
24-3M-15 X 1/4	24	.902	.872	1.025	6F	.2500	.742	1.057	.625	8-32(2)
26-3M-15 X 1/4	26	.977	.947	1.105	6F	.2500	.742	1.057	.625	8-32(2)
28-3M-15 X 1/4	28	1.053	1.023	1.173	6F	.2500	.742	1.057	.701	8-32(2)
30-3M-15 X 1/4	30	1.128	1.098	1.250	6F	.2500	.742	1.057	.776	8-32(2)
32-3M-15 X 1/4	32	1.203	1.173	1.323	6F	.2500	.742	1.057	.851	8-32(2)
34-3M-15 X 1/4	34	1.278	1.248	1.398	6F	.2500	.763	1.069	.921	8-32(2)
36-3M-15 X 1/4	36	1.353	1.324	1.473	6F	.2500	.763	1.069	1.000	8-32(2)
38-3M-15 X 1/4	38	1.429	1.399	1.549	6F	.2500	.763	1.069	1.075	8-32(2)
40-3M-15 X 1/4	40	1.504	1.474	1.625	6F	.2500	.763	1.069	1.150	8-32(2)
44-3M-15 X 1/4	44	1.654	1.624	1.775	6F	.2500	.763	1.069	1.300	8-32(2)
50-3M-15 X 5/16	50	1.880	1.850	—	6	.3125	.763	1.111	1.250	8-32(2)
56-3M-15 X 5/16	56	2.105	2.075	—	6	.3125	.763	1.111	1.250	8-32(2)
62-3M-15 X 5/16	62	2.331	2.301	—	6	.3125	.763	1.111	1.250	8-32(2)
72-3M-15 X 5/16	72	2.707	2.677	—	6	.3125	.763	1.111	1.250	8-32(2)

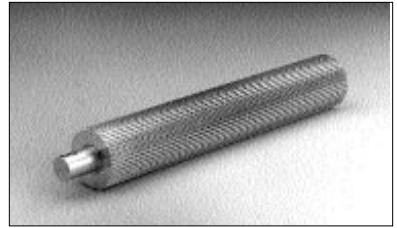
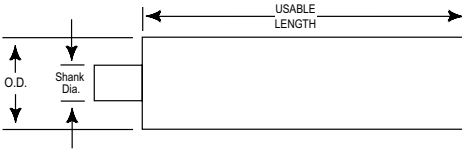


ALUMINUM 6061-T6 (RoHS compliant)



PART NUMBER	NO. OF GROOVES	PITCH DIA.	OUTSIDE DIA.	SHANK DIA.	USEABLE LENGTH
9-3M-P-3A	9	.338	.308	3/8	3"
10-3M-P-3A	10	.376	.346	3/8	3"
11-3M-P-3A	11	.414	.384	3/8	3"
12-3M-P-4A	12	.451	.421	3/8	4"
13-3M-P-4A	13	.489	.459	7/16	4"
14-3M-P-4A	14	.526	.496	7/16	4"
15-3M-P-4A	15	.564	.534	1/2	4"
16-3M-P-5A	16	.602	.572	1/2	5"
17-3M-P-5A	17	.639	.609	1/2	5"
18-3M-P-5A	18	.677	.647	1/2	5"
19-3M-P-5A	19	.714	.684	1/2	5"
20-3M-P-6A	20	.752	.722	1/2	6"
21-3M-P-6A	21	.790	.760	1/2	6"
22-3M-P-6A	22	.827	.797	1/2	6"
23-3M-P-6A	23	.865	.835	1/2	6"
24-3M-P-6A	24	.902	.872	1/2	6"
25-3M-P-6A	25	.940	.910	1/2	6"
26-3M-P-6A	26	.977	.947	1/2	6"
27-3M-P-6A	27	1.015	.985	1/2	6"
28-3M-P-6A	28	1.053	1.023	1/2	6"
29-3M-P-6A	29	1.090	1.060	1/2	6"
30-3M-P-7A	30	1.128	1.098	1/2	7"
31-3M-P-7A	31	1.165	1.135	1/2	7"
32-3M-P-7A	32	1.203	1.173	1/2	7"
33-3M-P-7A	33	1.241	1.211	1/2	7"
34-3M-P-7A	34	1.278	1.248	1/2	7"
35-3M-P-7A	35	1.316	1.286	1/2	7"

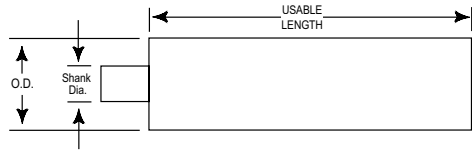
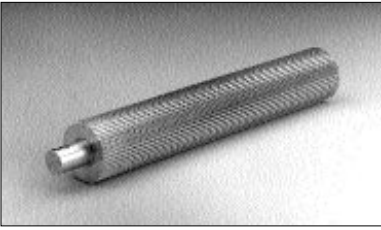
ALUMINUM 6061-T6 (RoHS compliant)



PART NUMBER	NO. OF GROOVES	PITCH DIA.	OUTSIDE DIA.	SHANK DIA.	USEABLE LENGTH
36-3M-P-8A	36	1.353	1.323	1/2	8"
37-3M-P-8A	37	1.391	1.361	1/2	8"
38-3M-P-8A	38	1.429	1.399	1/2	8"
39-3M-P-8A	39	1.466	1.436	1/2	8"
40-3M-P-8A	40	1.504	1.474	1/2	8"
42-3M-P-8A	42	1.579	1.549	1/2	8"
44-3M-P-8A	44	1.654	1.624	1/2	8"
45-3M-P-8A	45	1.692	1.662	1/2	8"
48-3M-P-8A	48	1.805	1.775	1/2	8"
50-3M-P-8A	50	1.880	1.850	3/4	8"
52-3M-P-8A	52	1.955	1.925	3/4	8"
54-3M-P-8A	54	2.030	2.000	3/4	8"
56-3M-P-8A	56	2.105	2.075	3/4	8"
60-3M-P-8A	60	2.256	2.226	3/4	8"
62-3M-P-8A	62	2.331	2.301	3/4	8"
64-3M-P-8A	64	2.406	2.376	3/4	8"
66-3M-P-8A	66	2.481	2.451	3/4	8"
68-3M-P-8A	68	2.557	2.527	3/4	8"
70-3M-P-8A	70	2.632	2.602	3/4	8"
72-3M-P-8A	72	2.707	2.677	3/4	8"
75-3M-P-8A	75	2.820	2.790	3/4	8"
80-3M-P-8A	80	3.008	2.978	3/4	8"
90-3M-P-8A	90	3.384	3.354	3/4	8"
100-3M-P-8A	100	3.760	3.730	1	8"
110-3M-P-8A	110	4.136	4.106	1	8"
120-3M-P-8A	120	4.511	4.481	1	8"
130-3M-P-8A	130	4.887	4.857	1	8"
140-3M-P-8A	140	5.263	5.233	1	8"
150-3M-P-8A	150	5.639	5.609	1	8"
160-3M-P-8A	160	6.015	5.985	1	8"

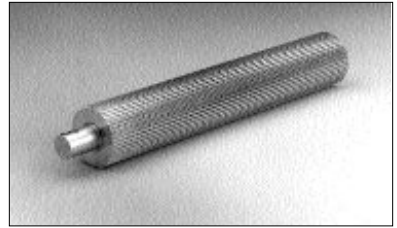
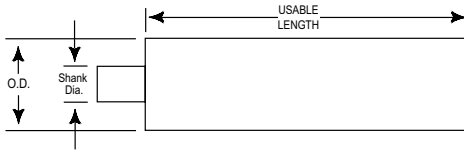


STEEL (RoHS compliant)



PART NUMBER	NO. OF GROOVES	PITCH DIA.	OUTSIDE DIA.	SHANK DIA.	USEABLE LENGTH
9-3M-P-3S	9	.338	.308	3/8	3"
10-3M-P-3S	10	.376	.346	3/8	3"
11-3M-P-3S	11	.414	.384	3/8	3"
12-3M-P-4S	12	.451	.421	3/8	4"
13-3M-P-4S	13	.489	.459	7/16	4"
14-3M-P-4S	14	.526	.496	7/16	4"
15-3M-P-4S	15	.564	.534	1/2	4"
16-3M-P-5S	16	.602	.572	1/2	5"
17-3M-P-5S	17	.639	.609	1/2	5"
18-3M-P-5S	18	.677	.647	1/2	5"
19-3M-P-5S	19	.714	.684	1/2	5"
20-3M-P-6S	20	.752	.722	1/2	6"
21-3M-P-6S	21	.790	.760	1/2	6"
22-3M-P-6S	22	.827	.797	1/2	6"
23-3M-P-6S	23	.865	.835	1/2	6"
24-3M-P-6S	24	.902	.872	1/2	6"
25-3M-P-6S	25	.940	.910	1/2	6"
26-3M-P-6S	26	.977	.947	1/2	6"
27-3M-P-6S	27	1.015	.985	1/2	6"
28-3M-P-6S	28	1.053	1.023	1/2	6"
29-3M-P-6S	29	1.090	1.060	1/2	6"
30-3M-P-7S	30	1.128	1.098	1/2	7"
31-3M-P-7S	31	1.165	1.135	1/2	7"
32-3M-P-7S	32	1.203	1.173	1/2	7"
33-3M-P-7S	33	1.241	1.211	1/2	7"
34-3M-P-7S	34	1.278	1.248	1/2	7"
35-3M-P-7S	35	1.316	1.286	1/2	7"

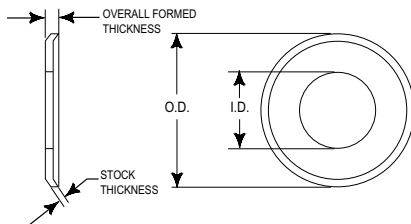
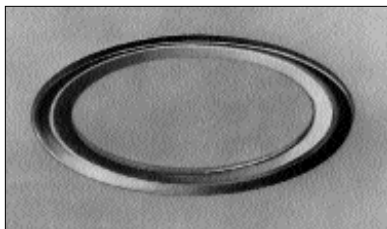
STEEL (RoHS compliant)



PART NUMBER	NO. OF GROOVES	PITCH DIA.	OUTSIDE DIA.	SHANK DIA.	USEABLE LENGTH
36-3M-P-8S	36	1.353	1.323	1/2	8"
37-3M-P-8S	37	1.391	1.361	1/2	8"
38-3M-P-8S	38	1.429	1.399	1/2	8"
39-3M-P-8S	39	1.466	1.436	1/2	8"
40-3M-P-8S	40	1.504	1.474	1/2	8"
42-3M-P-8S	42	1.579	1.549	1/2	8"
44-3M-P-8S	44	1.654	1.624	1/2	8"
45-3M-P-8S	45	1.692	1.662	1/2	8"
48-3M-P-8S	48	1.805	1.775	1/2	8"
50-3M-P-8S	50	1.880	1.850	3/4	8"
52-3M-P-8S	52	1.955	1.925	3/4	8"
54-3M-P-8S	54	2.030	2.000	3/4	8"
56-3M-P-8S	56	2.105	2.075	3/4	8"
60-3M-P-8S	60	2.256	2.226	3/4	8"
62-3M-P-8S	62	2.331	2.301	3/4	8"
64-3M-P-8S	64	2.406	2.376	3/4	8"
66-3M-P-8S	66	2.481	2.451	3/4	8"
68-3M-P-8S	68	2.557	2.527	3/4	8"
70-3M-P-8S	70	2.632	2.602	3/4	8"
72-3M-P-8S	72	2.707	2.677	3/4	8"
75-3M-P-8S	75	2.820	2.790	3/4	8"
80-3M-P-8S	80	3.008	2.978	3/4	8"
90-3M-P-8S	90	3.384	3.354	3/4	8"
100-3M-P-8S	100	3.760	3.730	1	8"
110-3M-P-8S	110	4.136	4.106	1	8"
120-3M-P-8S	120	4.511	4.481	1	8"
130-3M-P-8S	130	4.887	4.857	1	8"
140-3M-P-8S	140	5.263	5.233	1	8"
150-3M-P-8S	150	5.639	5.609	1	8"

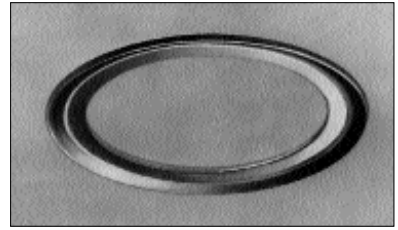
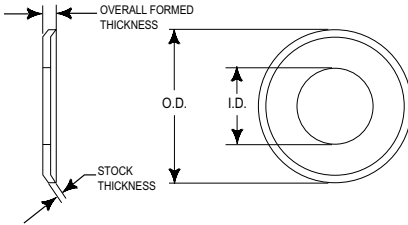


ALUMINUM (RoHS compliant)



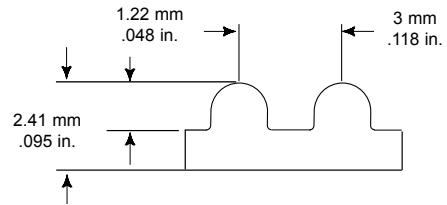
PART NUMBER	INSIDE DIA.	OUTSIDE DIA.	STOCK THICKNESS	OVERALL FORMED THICKNESS
10-3M-F5A	.244	.505	.025	.045
11-3M-F5A	.270	.530	.025	.045
12-3M-F5A	.322	.580	.025	.045
13-3M-F5A	.350	.610	.025	.045
14-3M-F5A	.374	.635	.032	.052
15-3M-F5A	.426	.685	.032	.052
16-3M-F5A	.452	.710	.032	.052
17-3M-F5A	.452	.740	.032	.052
18-3M-F5A	.504	.790	.032	.052
19-3M-F5A	.541	.827	.032	.052
20-3M-F5A	.574	.895	.032	.052
22-3M-F5A	.626	.945	.032	.052
24-3M-F5A	.704	1.025	.032	.052
25-3M-F5A	.738	1.060	.032	.052
26-3M-F5A	.774	1.105	.032	.052
28-3M-F5A	.849	1.173	.032	.052
30-3M-F5A	.924	1.250	.032	.052
32-3M-F5A	.999	1.323	.032	.052
34-3M-F5A	1.074	1.398	.040	.060
36-3M-F5A	1.149	1.478	.040	.060
38-3M-F5A	1.225	1.549	.040	.060
40-3M-F5A	1.300	1.625	.040	.060
44-3M-F5A	1.450	1.775	.040	.060

STEEL (RoHS compliant)



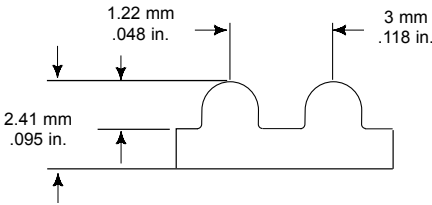
PART NUMBER	INSIDE DIA.	OUTSIDE DIA.	STOCK THICKNESS	OVERALL FORMED THICKNESS
10-3M-F6S	.244	.505	.025	.045
11-3M-F6S	.270	.530	.025	.045
12-3M-F6S	.322	.580	.025	.045
13-3M-F6S	.350	.610	.025	.045
14-3M-F6S	.374	.635	.032	.052
15-3M-F6S	.426	.685	.032	.052
16-3M-F6S	.452	.710	.032	.052
17-3M-F6S	.452	.740	.032	.052
18-3M-F6S	.504	.790	.032	.052
19-3M-F6S	.541	.827	.032	.052
20-3M-F6S	.574	.895	.032	.052
22-3M-F6S	.626	.945	.032	.052
21-3M-F6S	.704	1.025	.032	.052
25-3M-F6S	.738	1.060	.032	.052
26-3M-F6S	.774	1.105	.032	.052
28-3M-F6S	.849	1.173	.032	.052
30-3M-F6S	.924	1.250	.032	.052
32-3M-F6S	.999	1.323	.032	.052
34-3M-F6S	1.074	1.398	.040	.060
36-3M-F6S	1.149	1.478	.040	.060
38-3M-F6S	1.225	1.549	.040	.060
40-3M-F6S	1.300	1.625	.040	.060
44-3M-F6S	1.450	1.775	.040	.060

BLACK NEOPRENE, FIBERGLASS CORD (RoHS compliant)



BELT NUMBER	WIDTHS			PITCH LENGTH (MM)	NO. OF TEETH	BELT NUMBER	WIDTHS			PITCH LENGTH (MM)	NO. OF TEETH
	6MM	9MM	15MM				6MM	9MM	15MM		
87-3M	06	09	15	87	29	213-3M	06	09	15	213	71
102-3M	06	09	15	102	34	216-3M	06	09	15	216	72
105-3M	06	09	15	105	35	219-3M	06	09	15	219	73
111-3M	06	09	15	111	37	222-3M	06	09	15	222	74
120-3M	06	09	15	120	40	225-3M	06	09	15	225	75
123-3M	06	09	15	123	41	228-3M	06	09	15	228	76
126-3M	06	09	15	126	42	234-3M	06	09	15	234	78
129-3M	06	09	15	129	43	237-3M	06	09	15	237	79
132-3M	06	09	15	132	44	240-3M	06	09	15	240	80
135-3M	06	09	15	135	45	243-3M	06	09	15	243	81
141-3M	06	09	15	141	47	246-3M	06	09	15	246	82
144-3M	06	09	15	144	48	249-3M	06	09	15	249	83
147-3M	06	09	15	147	49	252-3M	06	09	15	252	84
150-3M	06	09	15	150	50	255-3M	06	09	15	255	85
153-3M	06	09	15	153	51	258-3M	06	09	15	258	86
156-3M	06	09	15	156	52	261-3M	06	09	15	261	87
159-3M	06	09	15	159	53	264-3M	06	09	15	264	88
162-3M	06	09	15	162	54	267-3M	06	09	15	267	89
165-3M	06	09	15	165	55	270-3M	06	09	15	270	90
168-3M	06	09	15	168	56	276-3M	06	09	15	276	92
171-3M	06	09	15	171	57	282-3M	06	09	15	282	94
174-3M	06	09	15	174	58	285-3M	06	09	15	285	95
177-3M	06	09	15	177	59	288-3M	06	09	15	288	96
180-3M	06	09	15	180	60	291-3M	06	09	15	291	97
183-3M	06	09	15	183	61	294-3M	06	09	15	294	98
186-3M	06	09	15	186	62	297-3M	06	09	15	297	99
189-3M	06	09	15	189	63	300-3M	06	09	15	300	100
192-3M	06	09	15	192	64	303-3M	06	09	15	303	101
195-3M	06	09	15	195	65	306-3M	06	09	15	306	102
198-3M	06	09	15	198	66	309-3M	06	09	15	309	103
201-3M	06	09	15	201	67	312-3M	06	09	15	312	104
204-3M	06	09	15	204	68	315-3M	06	09	15	315	105
207-3M	06	09	15	207	69	318-3M	06	09	15	318	106
210-3M	06	09	15	210	70	324-3M	06	09	15	324	108

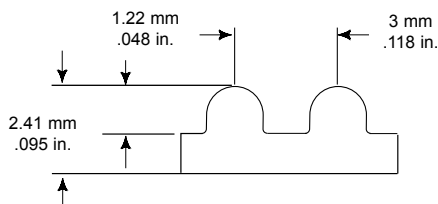
BLACK NEOPRENE, FIBERGLASS CORD (RoHS compliant)



BELT NUMBER	WIDTHS			PITCH LENGTH (MM)	NO. OF TEETH	BELT NUMBER	WIDTHS			PITCH LENGTH (MM)	NO. OF TEETH
	6MM	9MM	15MM				6MM	9MM	15MM		
330-3M	06	09	15	330	110	465-3M	06	09	15	465	155
333-3M	06	09	15	333	111	468-3M	06	09	15	468	156
336-3M	06	09	15	336	112	471-3M	06	09	15	471	157
339-3M	06	09	15	339	113	474-3M	06	09	15	474	158
342-3M	06	09	15	342	114	477-3M	06	09	15	477	159
345-3M	06	09	15	345	115	480-3M	06	09	15	480	160
351-3M	06	09	15	351	117	483-3M	06	09	15	483	161
357-3M	06	09	15	357	119	486-3M	06	09	15	486	162
360-3M	06	09	15	360	120	489-3M	06	09	15	489	163
363-3M	06	09	15	363	121	492-3M	06	09	15	492	164
366-3M	06	09	15	366	122	501-3M	06	09	15	501	167
369-3M	06	09	15	369	123	504-3M	06	09	15	504	168
372-3M	06	09	15	372	124	510-3M	06	09	15	510	170
375-3M	06	09	15	375	125	513-3M	06	09	15	513	171
381-3M	06	09	15	381	127	516-3M	06	09	15	516	172
384-3M	06	09	15	384	128	519-3M	06	09	15	519	173
387-3M	06	09	15	387	129	522-3M	06	09	15	522	174
390-3M	06	09	15	390	130	525-3M	06	09	15	525	175
393-3M	06	09	15	393	131	528-3M	06	09	15	528	176
396-3M	06	09	15	396	132	531-3M	06	09	15	531	177
399-3M	06	09	15	399	133	537-3M	06	09	15	537	179
405-3M	06	09	15	405	135	549-3M	06	09	15	549	183
411-3M	06	09	15	411	137	552-3M	06	09	15	552	184
417-3M	06	09	15	417	139	558-3M	06	09	15	558	186
420-3M	06	09	15	420	140	564-3M	06	09	15	564	188
426-3M	06	09	15	426	142	567-3M	06	09	15	567	189
432-3M	06	09	15	432	144	570-3M	06	09	15	570	190
435-3M	06	09	15	435	145	576-3M	06	09	15	576	192
438-3M	06	09	15	438	146	579-3M	06	09	15	579	193
441-3M	06	09	15	441	147	582-3M	06	09	15	582	194
444-3M	06	09	15	444	148	585-3M	06	09	15	585	195
447-3M	06	09	15	447	149	591-3M	06	09	15	591	197
459-3M	06	09	15	459	153	594-3M	06	09	15	594	198
462-3M	06	09	15	462	154	597-3M	06	09	15	597	199

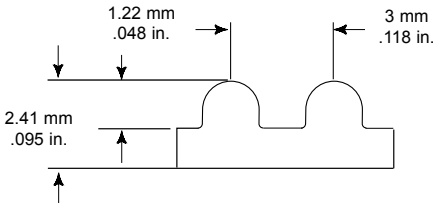


BLACK NEOPRENE, FIBERGLASS CORD (RoHS compliant)



BELT NUMBER	6MM	WIDTHS 9MM	15MM	PITCH LENGTH (MM)	NO. OF TEETH	BELT NUMBER	6MM	WIDTHS 9MM	15MM	PITCH LENGTH (MM)	NO. OF TEETH
600-3M	06	09	15	600	200	804-3M	06	09	15	804	268
606-3M	06	09	15	606	202	822-3M	06	09	15	822	274
609-3M	06	09	15	609	203	825-3M	06	09	15	825	275
612-3M	06	09	15	612	204	837-3M	06	09	15	837	279
627-3M	06	09	15	627	209	843-3M	06	09	15	843	281
633-3M	06	09	15	633	211	858-3M	06	09	15	858	286
639-3M	06	09	15	639	213	861-3M	06	09	15	861	287
645-3M	06	09	15	645	215	873-3M	06	09	15	873	291
648-3M	06	09	15	648	216	882-3M	06	09	15	882	294
651-3M	06	09	15	651	217	891-3M	06	09	15	891	297
654-3M	06	09	15	654	218	900-3M	06	09	15	900	300
657-3M	06	09	15	657	219	915-3M	06	09	15	915	305
660-3M	06	09	15	660	220	936-3M	06	09	15	936	312
663-3M	06	09	15	663	221	945-3M	06	09	15	945	315
669-3M	06	09	15	669	223	951-3M	06	09	15	951	317
672-3M	06	09	15	672	224	981-3M	06	09	15	981	327
681-3M	06	09	15	681	227	1002-3M	06	09	15	1002	334
684-3M	06	09	15	684	228	1026-3M	06	09	15	1026	342
687-3M	06	09	15	687	229	1035-3M	06	09	15	1035	345
693-3M	06	09	15	693	231	1038-3M	06	09	15	1038	346
696-3M	06	09	15	696	232	1050-3M	06	09	15	1050	350
699-3M	06	09	15	699	233	1056-3M	06	09	15	1056	352
702-3M	06	09	15	702	234	1062-3M	06	09	15	1062	354
705-3M	06	09	15	705	235	1071-3M	06	09	15	1071	357
711-3M	06	09	15	711	237	1086-3M	06	09	15	1086	362
720-3M	06	09	15	720	240	1125-3M	06	09	15	1125	375
723-3M	06	09	15	723	241	1155-3M	06	09	15	1155	385
732-3M	06	09	15	732	244	1191-3M	06	09	15	1191	397
735-3M	06	09	15	735	245	1245-3M	06	09	15	1245	415
738-3M	06	09	15	738	246	1263-3M	06	09	15	1263	421
750-3M	06	09	15	750	250	1335-3M	06	09	15	1335	445
753-3M	06	09	15	753	251	1500-3M	06	09	15	1500	500
783-3M	06	09	15	783	261	1512-3M	06	09	15	1512	504
795-3M	06	09	15	795	265	1530-3M	06	09	15	1530	510

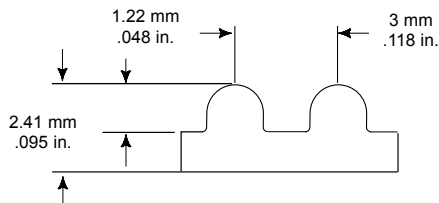
BLACK NEOPRENE, FIBERGLASS CORD (RoHS compliant)



BELT NUMBER	WIDTHS			PITCH LENGTH (MM)	NO. OF TEETH
	6MM	9MM	15MM		
1587-3M	06	09	15	1587	529
1800-3M	06	09	15	1800	600
1863-3M	06	09	15	1863	621
1890-3M	06	09	15	1890	630
1956-3M	06	09	15	1956	652
2004-3M	06	09	15	2004	668

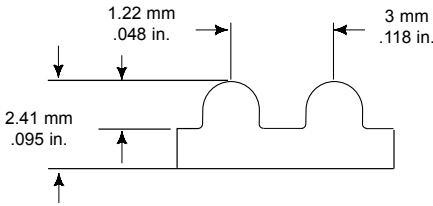


TRUMOTION, EPDM, FIBERGLASS CORD (RoHS compliant)



BELT NUMBER	WIDTHS			PITCH LENGTH (MM)	NO. OF TEETH	BELT NUMBER	WIDTHS			PITCH LENGTH (MM)	NO. OF TEETH
	6MM	9MM	15MM				6MM	9MM	15MM		
TM-87-3M	06	09	15	87	29	TM-240-3M	06	09	15	240	80
TM-102-3M	06	09	15	102	34	TM-246-3M	06	09	15	246	82
TM-105-3M	06	09	15	105	35	TM-252-3M	06	09	15	252	84
TM-111-3M	06	09	15	111	37	TM-255-3M	06	09	15	255	85
TM-123-3M	06	09	15	123	41	TM-258-3M	06	09	15	258	86
TM-129-3M	06	09	15	129	43	TM-261-3M	06	09	15	261	87
TM-132-3M	06	09	15	132	44	TM-264-3M	06	09	15	264	88
TM-144-3M	06	09	15	144	48	TM-267-3M	06	09	15	267	89
TM-147-3M	06	09	15	147	49	TM-270-3M	06	09	15	270	90
TM-150-3M	06	09	15	150	50	TM-276-3M	06	09	15	276	92
TM-156-3M	06	09	15	156	52	TM-282-3M	06	09	15	282	94
TM-159-3M	06	09	15	159	53	TM-285-3M	06	09	15	285	95
TM-165-3M	06	09	15	165	55	TM-288-3M	06	09	15	288	96
TM-168-3M	06	09	15	168	56	TM-291-3M	06	09	15	291	97
TM-174-3M	06	09	15	174	58	TM-297-3M	06	09	15	297	99
TM-177-3M	06	09	15	177	59	TM-300-3M	06	09	15	300	100
TM-180-3M	06	09	15	180	60	TM-306-3M	06	09	15	306	102
TM-183-3M	06	09	15	183	61	TM-312-3M	06	09	15	312	104
TM-186-3M	06	09	15	186	62	TM-315-3M	06	09	15	315	105
TM-189-3M	06	09	15	189	63	TM-318-3M	06	09	15	318	106
TM-192-3M	06	09	15	192	64	TM-324-3M	06	09	15	324	108
TM-195-3M	06	09	15	195	65	TM-330-3M	06	09	15	330	110
TM-201-3M	06	09	15	201	67	TM-333-3M	06	09	15	333	111
TM-204-3M	06	09	15	204	68	TM-336-3M	06	09	15	336	112
TM-207-3M	06	09	15	207	69	TM-339-3M	06	09	15	339	113
TM-210-3M	06	09	15	210	70	TM-345-3M	06	09	15	345	115
TM-213-3M	06	09	15	213	71	TM-357-3M	06	09	15	357	119
TM-216-3M	06	09	15	216	72	TM-360-3M	06	09	15	360	120
TM-219-3M	06	09	15	219	73	TM-363-3M	06	09	15	363	121
TM-222-3M	06	09	15	222	74	TM-366-3M	06	09	15	366	122
TM-225-3M	06	09	15	225	75	TM-369-3M	06	09	15	369	123
TM-228-3M	06	09	15	228	76	TM-372-3M	06	09	15	372	124
TM-234-3M	06	09	15	234	78	TM-381-3M	06	09	15	381	127
TM-237-3M	06	09	15	237	79	TM-384-3M	06	09	15	384	128

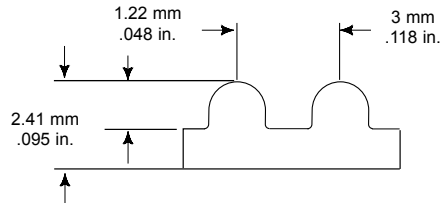
TRUMOTION, EPDM, FIBERGLASS CORD (RoHS compliant)



BELT NUMBER	WIDTHS			PITCH LENGTH (MM)	NO. OF TEETH	BELT NUMBER	WIDTHS			PITCH LENGTH (MM)	NO. OF TEETH
	6MM	9MM	15MM				6MM	9MM	15MM		
TM-387-3M	06	09	15	387	129	TM-570-3M	06	09	15	570	190
TM-390-3M	06	09	15	390	130	TM-576-3M	06	09	15	576	192
TM-393-3M	06	09	15	393	131	TM-585-3M	06	09	15	585	195
TM-396-3M	06	09	15	396	132	TM-591-3M	06	09	15	591	197
TM-399-3M	06	09	15	399	133	TM-597-3M	06	09	15	597	199
TM-405-3M	06	09	15	405	135	TM-600-3M	06	09	15	600	200
TM-411-3M	06	09	15	411	137	TM-606-3M	06	09	15	606	202
TM-417-3M	06	09	15	417	139	TM-609-3M	06	09	15	609	203
TM-420-3M	06	09	15	420	140	TM-612-3M	06	09	15	612	204
TM-426-3M	06	09	15	426	142	TM-627-3M	06	09	15	627	209
TM-432-3M	06	09	15	432	144	TM-633-3M	06	09	15	633	211
TM-435-3M	06	09	15	435	145	TM-639-3M	06	09	15	639	213
TM-438-3M	06	09	15	438	146	TM-645-3M	06	09	15	645	215
TM-444-3M	06	09	15	444	148	TM-648-3M	06	09	15	648	216
TM-447-3M	06	09	15	447	149	TM-654-3M	06	09	15	654	218
TM-459-3M	06	09	15	459	153	TM-657-3M	06	09	15	657	219
TM-465-3M	06	09	15	465	155	TM-663-3M	06	09	15	663	221
TM-468-3M	06	09	15	468	156	TM-669-3M	06	09	15	669	223
TM-471-3M	06	09	15	471	157	TM-672-3M	06	09	15	672	224
TM-474-3M	06	09	15	474	158	TM-684-3M	06	09	15	684	228
TM-480-3M	06	09	15	480	160	TM-687-3M	06	09	15	687	229
TM-486-3M	06	09	15	486	162	TM-696-3M	06	09	15	696	232
TM-489-3M	06	09	15	489	163	TM-711-3M	06	09	15	711	237
TM-492-3M	06	09	15	492	164	TM-735-3M	06	09	15	735	245
TM-501-3M	06	09	15	501	167	TM-738-3M	06	09	15	738	246
TM-510-3M	06	09	15	510	170	TM-750-3M	06	09	15	750	250
TM-513-3M	06	09	15	513	171	TM-753-3M	06	09	15	753	251
TM-519-3M	06	09	15	519	173	TM-795-3M	06	09	15	795	265
TM-525-3M	06	09	15	525	175	TM-804-3M	06	09	15	804	268
TM-528-3M	06	09	15	528	176	TM-822-3M	06	09	15	822	274
TM-531-3M	06	09	15	531	177	TM-837-3M	06	09	15	837	279
TM-537-3M	06	09	15	537	179	TM-843-3M	06	09	15	843	281
TM-558-3M	06	09	15	558	186	TM-873-3M	06	09	15	873	291
TM-564-3M	06	09	15	564	188	TM-882-3M	06	09	15	882	294



TRUMOTION, EPDM, FIBERGLASS CORD (RoHS compliant)



BELT NUMBER	WIDTHS			PITCH LENGTH (MM)	NO. OF TEETH	BELT NUMBER	WIDTHS			PITCH LENGTH (MM)	NO. OF TEETH
	6MM	9MM	15MM				6MM	9MM	15MM		
TM-891-3M	06	09	15	891	297	TM-1062-3M	06	09	15	1062	354
TM-900-3M	06	09	15	900	300	TM-1125-3M	06	09	15	1125	375
TM-915-3M	06	09	15	915	305	TM-1155-3M	06	09	15	1155	385
TM-945-3M	06	09	15	945	315	TM-1191-3M	06	09	15	1191	397
TM-951-3M	06	09	15	951	317	TM-1263-3M	06	09	15	1263	421
TM-981-3M	06	09	15	981	327	TM-1335-3M	06	09	15	1335	445
TM-1002-3M	06	09	15	1002	334	TM-1500-3M	06	09	15	1500	500
TM-1026-3M	06	09	15	1026	342	TM-1512-3M	06	09	15	1512	504
TM-1035-3M	06	09	15	1035	345	TM-1587-3M	06	09	15	1587	529
TM-1056-3M	06	09	15	1056	352	TM-1956-3M	06	09	15	1956	652